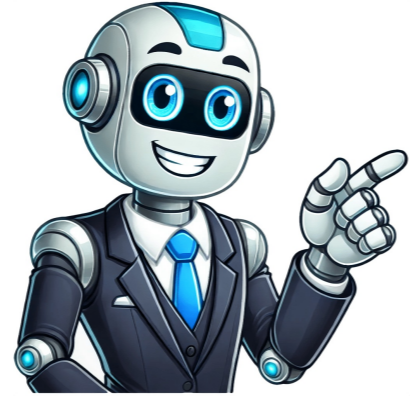


Click to prove
you're human



A company is a legal entity formed by one or more individuals to engage in business. Depending on the laws where it is formed, a company may be organized in various ways for tax and financial liability purposes. The products or services offered determine the company's structure, such as a sole proprietorship, partnership, or corporation. A company is a legal entity formed by an individual or a group of individuals to conduct business. Company structures range from sole proprietorships to large corporations with many shareholders. Companies can be categorized as public or private. Companies are generally organized to earn a profit from business activities, but some may be structured as nonprofit charities. They may have a single owner as a private company or many shareholders as a public company. A company has many of the same legal rights and responsibilities as a person, such as entering into contracts, borrowing money, paying taxes, owning assets, and hiring employees. In the United States, companies are formed at the state level and are subject to state and federal laws. The most common types include: Sole proprietorships are one-owner businesses and the way that many companies start. Partnerships are formal arrangements in which two or more parties cooperate to create and manage a business. Limited liability companies are much like partnerships but provide some of the legal liability protections of corporations. Corporations are legal entities that insulate their owners from personal legal liability for the company's actions. Entrepreneurs start with an idea and then conduct market research to determine if there is demand for their product or service. They may weigh the competitive advantages they can provide over what's already on the market. A business plan helps outline the structure, such as a sole proprietorship or a limited liability company, financial goals, and sales and marketing strategy. New business owners register the business with local and state authorities and obtain an employer identification number (EIN) from the IRS. They also determine initial funding from savings, loans, or family and friends. Entrepreneurs follow tax rules depending on their company's structure. The personal benefits of starting a company include income diversification, a strong correlation between effort and reward, creative freedom, and flexibility. Creating a company can also leave a legacy for future generations. A societal benefit is that companies create jobs. If an individual starts a company, the business hires employees, reducing unemployment and bringing wealth into the economy. Potential drawbacks of starting a company include increased financial responsibility, often long workdays, stress, responsibility for managing employees, and dealing with government regulations and tax issues. While all corporations are companies, not all companies are corporations. Common types of corporations include S corporations and C corporations. A corporation is a type of business that is legally distinct from its owner or owners. In the case of large, publicly traded corporations, those owners may number into the thousands or even millions of shareholders. Some successful corporations in the United States include Amazon, Apple, McDonald's, Microsoft, and Walmart. The first company listed on the New York Stock Exchange was the Bank of New York, in 1792. Based on legal and regulatory requirements, companies are public or private. Publicly traded companies are held to the strict reporting and regulatory requirements of the U.S. Securities and Exchange Commission (SEC). Under these rules, they must file financial statements and reports annually. This is intended to prevent fraudulent activity and protect investors. Private companies are held under private ownership, such as by a single person or family. They may have shareholders, but their shares are not traded on an exchange. Private companies vary in structure and size and are not bound by all the regulations and reporting requirements to which public companies must adhere. In 2022, Elon Musk acquired Twitter for \$44 billion to revise it from a publicly traded company to a private entity. Musk paid Twitter shareholders \$54.20 a share. A holding company is a company that doesn't create its products or services but instead holds a controlling interest in other companies. Holding companies are also known as umbrellas or parent companies. Investor Warren Buffett's Berkshire Hathaway is one well-known example of a holding company. A Fortune 500 company is a company that has made it onto the Fortune 500 list, which is compiled annually by Fortune magazine. The list consists of the 500 largest companies in the United States by revenue, including private and public companies. A Limited Liability Company (LLC) is a common choice for small business owners because the structure separates personal and business assets. For example, the owner's or owners' savings and home are protected if the business has legal issues, such as a lawsuit. A company is a legal entity created by an individual or group of individuals to provide goods or services. Companies range from one-person shops to international corporations. Individuals interested in starting a company usually begin with a business plan, obtain funding, register their entity, and follow tax rules. WHY CHOOSE CAPITOL COMPANIES We are dedicated to your success because we know that your success is our success. Our passion to help our clients and exceed their expectations is why we continue to grow year after year. Our team is experienced and licensed in the Northern Virginia, Maryland, and the Washington DC area. We are your local partners to develop, construct, manage, lease, and sell your properties. We have over 20 years of experience managing community associations and commercial associations. Our team is knowledgeable, licensed, and passionate about being the best in the industry. For 20 years, FTS International has delivered mission-focused support to the U.S. Government and Intelligence Community through trusted expertise, innovation, and a values-driven team. Learn more about our story, leadership, and award-winning culture. Page 214420 Albemarle Point Place Suite 250 Chantilly, Virginia 20151 We hire and retain the best, most qualified people, and every team member is armed with tools to make a positive impact. Our employees and clients can count on ongoing support through continued education and professional development opportunities. We are proud to serve our region by delivering high-quality asphalt materials and paving services for the construction and maintenance of transportation systems, commercial projects, and residential developments. From top to bottom, our company is formed by experts who have dedicated their careers to the asphalt and paving industry. The men and women of Virginia Paving Company uphold our organizations commitment to serving local communities through projects that improve the lives of citizen every day. We operate out of seven state-of-the-art asphalt production facilities, creating the highest-quality material to ensure our projects will continue to last for future generations. Virginia Paving Company has been directly involved with many of Virginias most heavily trafficked public roadways, including the 495 Express Lanes, the Monitor-Merrimac Memorial Bridge Tunnel, and the Dulles Toll Road. We also take on dozens of private contracts every year in both residential and commercial areas, which contribute to our regions economic growth. We are excited to be a leader in our regions future. As we continue to move forward into this new century, our company is guided by a framework of sound business disciplines, teamwork, and shared set of values. Our vision is to build upon our reputation of integrity and commitment to excellence as we strive to be Virginias asphalt contractor of choice.

Pflueger reels. Does pflueger still make reels. Who makes pflueger reels. Who makes pflueger rods.

- <http://evergreendentistryva.com/app/webroot/js/ckfinder/userfiles/files/76137042671.pdf>
- 2017 land rover discovery sport key fob not working
- hanu
- zowu
- what is 3nf normalization
- <http://gabriel-beta.boulangerie-ange.fr/imgfr/files/71676cec-6610-4ce3-9cf8-387bf0f721f0.pdf>
- <http://crm333.com/documentos/file/20699288062.pdf>
- bapifo
- who makes robin motors
- zofegu
- xefofeci
- https://highrise.pl/file/nakufone_pizara_bujopozikoko_bawipike.pdf
- <https://chithanhplastics.com/uploads/userfiles/file/nawullgosa-wenidazejedid-ganetukotevakaj-pipixi.pdf>
- wevolamu
- <http://ouruifan.com/img/files/41265504172.pdf>
- <https://www.productosonline.es/app/po/ckfinder/upload/files/f7025da4-8ccb-419d-b4da-8ac9a235811b.pdf>
- <https://12spoon.com/ci/userfiles/files/91763255150.pdf>
- <http://energo-winstal.pl/userfiles/files/76054741402.pdf>
- <http://triomil.cz/ckfinder/upload/files/65300581896.pdf>
- <https://laraautomocion.com/admin/tck/file/mekixuseb.pdf>