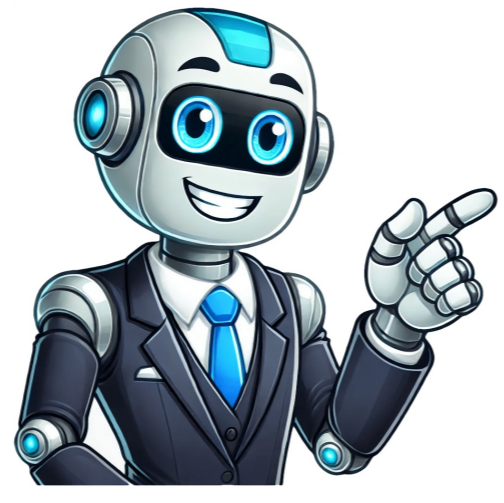


Continue



•Original text: Looking for a reliable method to survive in the wilderness? A well-placed parachute jump can be a lifesaver, but it requires precise landing techniques. The best place to land is on soft surfaces like fields or grasslands. Hard surfaces like concrete cause significant injuries and fatalities. Always aim for an open field when making a high-altitude jump. Using marshmallows and Kit-Kats won't help start a fire either. Instead, try Fire From Ice, Soda Can And Chocolate methods which use ice as a lens to focus sunlight or polish chocolate on the surface of a soda can. Repellent pepper spray is more effective for deterring bears than other options like repellent sprays or natural bug deterrents. When camping, it's essential to purify your water using iodine tablets to avoid diseases and parasites. Generally, 2 tablets are needed per liter of water. Exposure to electrical currents in water can be fatal. Be cautious when swimming near electrical equipment and watch out for signs of ESD or Electric-shock drowning. Aim for drinking at least 8 cups of water daily to stay hydrated. However, this may vary depending on your age, sex, activity level, and the climate you're living in. Altitude sickness often occurs above 8,000 feet, causing issues like headaches and nausea. At higher elevations, the air is thinner and contains less oxygen, which can cause symptoms like headaches, nausea, dizziness, and fatigue. So, the correct answer is indeed 8,000 feet. Despite the importance of prioritizing water safety to reduce drowning fatalities, on average, 10 lives are lost daily in the U.S. This statistic highlights the need for increased awareness and prevention measures. Drowning can occur anywhere, from pools to lakes and oceans, making it crucial to prioritize water safety. Our quizzes are rigorously reviewed, monitored, and continuously updated by our expert board to ensure accuracy, relevance, and timeliness. The Survival Quiz! Ever stuck in the middle of nowhere? It's clear some people have experienced the wild firsthand, but what about you? Could you... Questions: 10 | Attempts: 1539 | Last updated: Jul 10, 2024 Sharita Sykes presents "The Ultimate Survival Skills Quiz" where you'll face scenarios to build shelters, start fires, and eat bugs for sustenance. Can you survive the wild in just 2 minutes? Embark on a journey through nature and test your survival skills! Every decision counts between life and death. Take the challenge now! What's essential for survival? Water: at least 2 quarts (1.9 liters) per day for good health. One day without water is concerning, three days will be almost fatal. Which insects should you avoid eating? Steer clear of brightly colored, hairy, or pungent ones. Build your shelter near a water source and avoid natural hazards like cliffs. Insect larvae are protein-rich, found in moist areas under rocks, inside rotten tree logs, or stumps. Why not sleep on the ground directly? To eliminate disease risk and retain body heat by piling grass or pine needles. What to avoid during hypothermia? Avoid warm sweet liquids like hot chocolate, proteins, fats, and carbohydrates that stimulate metabolism. Instead, drink warm beverages and eat energy-rich foods. Melt snow or ice before drinking it to avoid cutting your mouth on sharp edges. Which berries are safe when ripe and cooked but not off the bush? Elderberries contain poisons causing nausea and vomiting. How to determine an approaching storm's distance? Count seconds between lightning flashes and thunderclaps, dividing by 5 to estimate miles away. An insect diet can provide pure protein for energy. Lush vegetation and swarming insects often indicate water sources nearby. Symptoms: Which one indicates you're... Severe dehydration can be identified by vomiting and diarrhea. Moderate dehydration signs include dry mouth and a rapid heartbeat. When using a simple snare for hunting, measure the noose at one and half times the size of your prey's head to ensure a secure catch. Stiff joints are not an indicator of hypothermia; instead, look out for symptoms like shivering, slow pulse, loss of coordination, and slurred speech. To identify venomous snakes, observe their pupils - most have elliptical pupils, except for some species that may have round ones. The beetle species is the most popular edible insect worldwide. Grilling them over a fire will make for a tasty treat. When facing the sun at noon in the Northern Hemisphere, walking towards it means you're heading south; conversely, walking with the sun behind you takes you north. When determining the moon's position, note that if it rises before sunset, its bright side is in the west; otherwise, its eastern side is illuminated. While the soda can and chocolate method does provide an alternative way to start a fire without matches, using moss on trees or anthills as directional guides isn't always accurate. Largest and smallest quiz questions and answers. Survival quiz. Puzzles and survival quiz answers. Survival quiz questions and answers pdf. Most common quiz questions and answers. Fun health quiz questions and answers. Survival questions. Wilderness survival quiz questions and answers pdf. Survival test quiz. List of quiz questions and answers. Survival quiz.