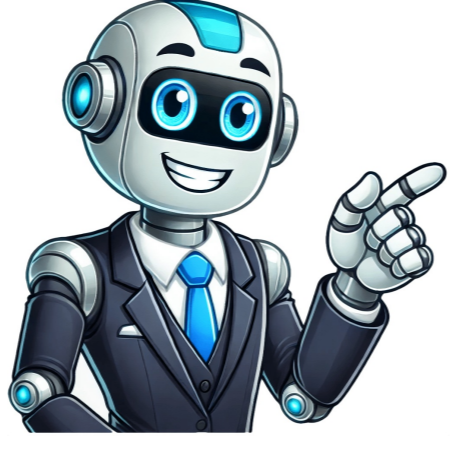


Click to prove  
you're human































System OverviewThe CP2105 is a highly-integrated USB-to-Dual-UART Bridge Controller providing a simple solution for updating RS-232 designs to USB using a minimum of components and PCB space. The CP2105 includes a USB 2.0 full speed function controller, USB transceiver, oscillator, one-time programmable ROM, and two asynchronous serial data buses (UART) with full modem control signals in a compact 4 x 4 mm QFN-24 package (sometimes called "MLF" or "MLP"). The on-chip one-time programmable ROM may be used to customize the USB Vendor ID, Product ID, Product Description String, Power Descriptor, Device Release Number, Interface Strings, Device Serial Number, and Modem/GPIO configuration as desired for OEM applications. Royalty-free Virtual COM Port (VCP) device drivers provided by SiliconLabs allow a CP2105-based product to appear as two COM ports in PC applications. The CP2105 UART interfaces implement all RS-232 signals including control and handshaking, so existing system firmware does not need to be modified. The device also features a total of five GPIO signals that can be user-defined for status and control information. Support for I/O interface voltages down to 1.8 V is provided via a VIO pin. Direct access driver support is also available through the Silicon Labs USBXpress driver set. See [www.silabs.com](http://www.silabs.com) for the latest application notes and product support information for the CP2105. An evaluation kit for the CP2105 (Part Number: CP2105EK) is available. It includes a CP2105-based USB-to-UART/RS-232 evaluation board, a complete set of VCP device drivers, USB and RS-232 cables, and full documentation. Contact a Silicon Labs sales representative or go to [www.silabs.com](http://www.silabs.com) to order the CP2105 Evaluation Kit. Symbol and Footprint for this part were not created by SnapMagic, if you would like our team to create this part for you then Request Now You've created this part using InstaBuild. This part is only visible to you. Re-build Part You've created the footprint using InstaBuild (this footprint is only visible to you). You can now build the symbol below. Re-build Footprint No web preview This Symbol is Available for symbol CP2105 - User Submitted CP2105 - User Submitted Report This symbol was not created by SnapMagic Search, please be cautious when using it in your design Downloaded times No web preview This Footprint is Available for This footprint was not created by SnapMagic Search, please be cautious when using it in your design Downloaded times Relevant part with 2D models in stock Verification Issues Specs Pricing Part Name CP2105 Manufacturer Silicon Labs Formats Available for Symbols and Footprints Altium, Eagle, KiCAD, Cadence OrCad/Allegro, PADS, DxDesigner, PCB123, Pulsonix, Proteus Width 4 (mm) Dimensions 4 x 4 x 0.75 (mm) Mounting Type Surface Mount Esd Protection Yes Power Supply Type Single Protocols Supported USB to Dual UART Ic Type Controller IC Height 0.75 (mm) Number Of Transceivers 1 Length 4 (mm) Package Type QFN Minimum Operating Temperature -40 °C Data Rate 2 (Mbps) Maximum Operating Temperature +85 °C Pin Count 24 We could not find inventory or pricing across major distributors for the CP2105 by Silicon Labs. This part has no questions yet. Ask a Question