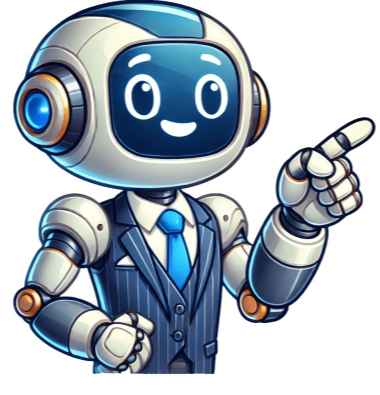


Continue



enhancing aesthetic appeal while maintaining structural integrity.

3. Customized Shapes Beyond standard rectangles and squares, tempered glass can be fabricated into various shapes, including curves and angles. This customizability provides designers with endless possibilities and allows for innovative architectural features, such as curved glass walls or unique skylights.

Application-Specific Dimensions

The dimensions of tempered glass are often dictated by the specific application. For instance, the requirements for tempered glass used in a storefront window differ from those required for shower enclosures or glass railings.

tempered glass dimensions 1. Commercial Use

In commercial applications, the dimensions of tempered glass must often accommodate large openings while providing the necessary strength to resist vandalism and breakage. For instance, glass facades in shopping malls or office buildings may require larger dimensions to create a seamless look while ensuring safety.

2. Residential Use

In residential applications, tempered glass is commonly used for doors and windows. Here, dimensions are frequently tailored to fit existing frames. The thickness is particularly important, as it must meet local building codes regarding safety and insulation.

3. Shower Enclosures

For shower doors and enclosures, tempered glass dimensions are critical in ensuring both safety and functionality. These pieces typically range from 1/4 inch to 1/2 inch in thickness and are available in various sizes to fit standard shower stalls. The glass must also be precisely cut to avoid sharp edges, ensuring user safety.

Industry Standards and Regulations

Dimensions of tempered glass are not arbitrary; they are governed by industry standards and regulations that dictate the minimum requirements for safety and performance. In many regions, tempered glass must comply with building codes and certifications such as ANSI Z97.1 or ASTM C1048.

Understanding these standards is essential for manufacturers, architects, and contractors to ensure the material is not only aesthetically pleasing but also safe and functional.

Conclusion

The Role of Dimensions in the Future of Tempered Glass

As the demand for energy-efficient buildings and innovative design continues to rise, the importance of tempered glass dimensions will only increase. Advances in manufacturing technology may allow for even more precise customizations and new dimensions to meet diverse architectural needs. Ultimately, understanding tempered glass dimensions is crucial for anyone involved in construction or design, highlighting the balance between functionality, safety, and aesthetic appeal.

In summary, whether for a simple residential project or a complex commercial installation, paying careful attention to the dimensions of tempered glass ensures that the final product not only meets safety standards but also complements the intended design vision.

Skip to content

If you are designing glass features on a building, then you'll need to work with standard glass panel sizes to ensure your designs can translate into reality. Here we look at the standard sizes glass panels typically come in and other considerations you'll want to think about when designing architectural drawings with glass components.

Glass Panel Sizes Standard

The standard size for glass panels is 2.5 meters by 3.6 meters, which is equal to 8.2 feet by 11.9 feet. If you order a standard glass panel, this is the size you can expect to receive. If you want glass smaller than this, you can have a glazer custom cut your glass panels to size, from the original panels at full measurement. Glass panels come in this standard size to make the manufacturing process easier, and so designers who use glass know what they have to work with.

Jumbo Jumbo glass panels are bigger than standard size panels, and these are what you will need to choose if the standard size of glass panels isn't going to be big enough for what you have in mind. Jumbo glass panels come in two typical sizes. The smaller of the two is 5 meters by 3 meters, which equates to 16.4 feet by 9.8 feet in imperial measurements. The larger size of jumbo glass panels is 6 meters by 3.3 meters, which is the equivalent of 19.7 feet by 10.8 feet.

The largest jumbo panel of glass will cover a huge 19 square meters of space and weigh almost a ton. Legally there is no limit on the maximum size of glass panels; however, most glass manufacturers create their own maximum glass panel limits in order to make sure the glass can be transported and that it is strong enough to make it fit for purpose.

Glass Considerations

When you are designing a building with large glass-paneled walls or glass panels on the roof, then there are other things to consider besides the size of the glass. Here we look at other elements that are necessary to think about when choosing glass panels for architectural projects.

Heat retention

Heat retention is really important for buildings that have a high proportion of exterior glass in their walls or ceilings. This is because, unlike solid walls built from brick or timber framing, you cannot insulate glass. Insulating walls and ceilings is important to make a building energy efficient. Insulation will help to prevent heat from escaping a property, so that energy usage and energy bills will be low. Insulation also helps to keep buildings cool during warmer weather. Without the ability to insulate, it's important that one of the qualities of the glass you choose is its ability to retain heat. Heat retaining glass panels will help to keep energy usage low, reducing the impact on the environment, and it will also help to save money on energy bills.

Single pane glass is a poor option in terms of heat retention because it will allow 50% more heat to escape compared with double-paned glass. By using double-paned glass, you can cut energy usage and energy bills in half compared with single-paned glass. If you really want to improve the heat retention properties of your home, opt for low emissivity glass, which will save up to 80% on energy usage and energy bills compared with standard single pane glass.

Acoustic protection

If you are building a property in an area where noise is going to be an issue, then consider using special types of glass for acoustic protection. Standard double-paned glass is going to offer better protection against noise compared with single pane glass, and it is especially effective at blocking out higher frequency noise. If you want to ensure ultimate protection against external sounds, you can use polyvinyl panes, which also blank out low-frequency sounds. To minimize the noise levels in an airport or train station, use double-paned glass panels where each individual panel has a greater distance between them than usual. By creating a larger gap between each glass panel, the level of noise heard inside the building can be lowered by several decibels.

Vandalism protection

Laminated glass is ideal for protection against vandalism and in other scenarios where extra strength is important. Laminated glass will be made from two glass panels that have a layer of laminate film in between them, or you can also get double or triple laminated glass panels with extra layers of laminate film. These are more difficult for vandals to break compared with ordinary double-pane panels because you would need to break through the first layer of glass, then the laminate film, then the second layer of glass, in order to gain entry to a building through the glass panels. This would be a time-consuming process, during which time an intruder is likely to set off alarms and be spotted or scared off.

This type of glass is often a favorite among expensive luxury homes, which may be more likely to be the target of break-ins and theft. Laminated glass also works well for glass floors because it has additional strength to ensure it won't crack under heavy weight or pressure from numerous people standing on it at once.

Mechanical resistance

Glass panels that are used in moving parts of buildings, such as doors, will need to be made from a glass that has been tempered. This is a chemical treatment that increases the strength of the glass so that it won't crack under heavy mechanical use. Tempered glass also offers increased protection against excessive heat. If your building is located in an area that expects high temperatures, regular glass panels are susceptible to breakages due to intense exposure to sunlight and heat. Prevent these issues by opting for tempered glass, which is much more resistant to the pressure caused by excessive heat.

Subscriber Access

Town House in Antwerp / Sculp[IT]. Image © Luc RoymansToday, improvements in glass processing technology have made it possible to render specific and effective solutions for a wide range of architectural projects. In fact, there are so many options available that it's almost necessary to research different products and their properties, and how this will impact, for example, the windows and doors that you are designing.

What variables should be considered – and prioritized – when choosing the glass used in a project? How can aesthetics coincide with function and efficiency? We sat down with the experts at Cristales Dialum to delve into the complex world of glass and to better understand the hows and whys of choosing the best type of glass for your projects and ensuring the best results for your clients.

Alto El Cofre / Handel Architects. Image © Nico Saieli About this author Cite: Franco, José Tomás. "How to Choose the Right Glass for Your Projects" [Cómo especificar un buen vidrio en un proyecto de arquitectura] 22 Jun 2019. ArchDaily. (Trans. Johnson, Maggie) Accessed: - < ISSN 0719-8884

Understanding Tempered Glass Dimensions

A Comprehensive Guide

Tempered glass, also known as toughened glass, has become a popular choice for various applications due to its enhanced strength and thermal resistance. It is created through a process of extreme heating and rapid cooling, which increases its durability and makes it safer than standard glass.

However, when it comes to utilizing tempered glass in construction and design, understanding its dimensions is crucial. This article delves into the key aspects of tempered glass dimensions, their importance, and how to choose the right specifications for your project.

Importance of Accurate Dimensions

When selecting tempered glass for windows, doors, partitions, or any structural applications, precise dimensions play a critical role. The size and thickness of tempered glass not only affect its strength and performance but also dictate its suitability for different applications. Using the wrong dimensions can lead to safety hazards and structural failures, so it is vital to ensure that the glass is cut and treated according to specific measurements.

Common Dimensions

Tempered glass is available in various standard sizes and thicknesses, typically ranging from 3mm to 19mm in thickness. The most common standard sizes for sheets of tempered glass are 48" x 96", 60" x 120", and 72" x 144". Custom sizes are also available, allowing manufacturers to cut glass specifically tailored to unique architectural requirements.

The choice of thickness is particularly important. For instance, glass thickness of 6mm is suitable for light-duty applications such as interior doors or low-rise partitions. In contrast, thicker glass, such as 12mm or more, is preferred for high-impact environments, like shower enclosures or exterior facades.

Furthermore, the dimensions of tempered glass must adhere to local building codes and regulations, making it essential for architects and builders to stay informed about these guidelines.

Factors Influencing Glass Dimensions

tempered glass dimensions Several factors influence the dimensions of tempered glass. The intended application is perhaps the most crucial; for example, glass used in facades requires larger dimensions and greater thickness to withstand wind pressures and structural loads compared to glass used for tabletops. Additionally, the design aesthetic plays a significant role, as larger and frameless designs are increasingly popular in modern architecture.

Another significant factor is the manufacturing process. When tempered glass is made, it undergoes cutting, which can affect the final dimensions. It's essential that the glass be cut accurately before the tempering process, as any errors can lead to compromises in strength and safety.

Measurement and Templates

To achieve the correct dimensions, precise measurements are vital. This is especially true in custom projects where every millimeter counts. Manufacturers and installers often use templates to ensure the glass panels fit perfectly into their intended spaces. For example, when installing glass railings or balustrades, a custom template based on measurements taken on-site can help avoid discrepancies that could lead to requiring additional modifications.

Safety Considerations

One of the reasons tempered glass is favored in installations is its safety features. When broken, tempered glass shatters into small, blunt pieces rather than sharp shards, reducing the risk of injuries. However, the effectiveness of this safety feature is partially dependent on correct dimensions. Improperly sized glass panels may not break predictably or could pose a risk if stress points are created due to misalignments.

Conclusion

In summary, the dimensions of tempered glass are a critical component of any architectural or design project. Understanding the importance of accurate measurements and being aware of standard sizes can aid in making informed decisions. Whether you are an architect, builder, or homeowner, grasping the principles surrounding tempered glass dimensions will not only enhance safety and structural integrity but also contribute to the aesthetic appeal of your space. Investing time in understanding these dimensions can lead to better outcomes and a smoother project execution.

As tempered glass continues to be a favored choice in modern constructions, knowledge about its dimensions will remain essential in making sound choices. When it comes to safety and durability, tempered glass is one of the first types that comes to mind. Widely used in both buildings and the automotive industry, this type of glass undergoes a special process to become much more durable. In this article, we will discuss tempered glass thickness options, international standards, and weight calculation methods in detail.

Tempered glass is produced in various thicknesses, and the appropriate thickness should be selected according to the area of use. Commonly used thicknesses include:

- 4 mm: Typically used in interior applications.
- 6 mm: An ideal option for doors and windows.
- 8 mm: Preferred for office partition walls and bathroom panels.
- 10 mm and 12 mm: Suitable for larger and more durable structures.

How to Choose the Right Thickness?

When selecting tempered glass thickness, the area where the glass will be used and the load it will be exposed to should be considered. For example, thicker glass is preferred for exterior cladding, while thinner glass is sufficient for interior partitions.

The Impact of Thickness on Safety and Performance

Glass thickness directly affects both the durability and safety performance of the glass. Thicker glass is more resistant to impacts and shocks, providing longer service life in large glass panels. Tempered glass is produced in compliance with various international standards. Here are the main standards:

- EN 12150: The standard for tempered glass in the European Union.
- ANSI Z97.1: Safety glass standards in the United States.
- BS 6206: Certification for safety glass in the United Kingdom.

Standards Applied in Buildings and the Automotive Industry

In buildings, tempered glass is typically used for exterior cladding, windows, and partition walls. In the automotive industry, tempered glass is mostly used for side windows and rear windows. Glass Certification Processes

The certification process for tempered glass is completed after manufacturers pass specific tests. These tests verify the durability of the glass and its compliance with safety standards. The commonly used formula to calculate the weight of tempered glass is:

Weight (kg) = Thickness (mm) x Area (m²) x 2.5

This formula is used to determine the weight per square meter of tempered glass.

Glass Weight Based on Different Thicknesses

- 4 mm: Approximately 10 kg/m²
- 6 mm: Approximately 15 kg/m²
- 8 mm: Approximately 20 kg/m²
- 10 mm: Approximately 25 kg/m²
- 12 mm: Approximately 30 kg/m²

See also: What is Plexiglass? Features and Uses

The Impact of Glass Weight on Installation and Transportation Processes

The weight of the glass affects both the installation process and transportation costs. Lighter glass is easier to install, while heavier glass requires a more careful transportation process. Tempered glass is used in buildings to ensure safety in windows, doors, and partition walls. Its impact-resistant structure provides security in both indoor and outdoor spaces.

Tempered Glass in the Automotive Industry

In cars, tempered glass is used for side windows and rear windows. When broken, it shatters into small pieces, reducing the risk of injury. Additionally, it is resistant to high temperatures and pressure.

Tempered Glass in Interior Decoration

In interior decoration, tempered glass is commonly used in shower cabins, tabletops, stair railings, and kitchen panels. It offers both aesthetic and durable solutions. Tempered glass thicknesses are determined based on the area of use and the load the glass will be exposed to. Thinner glass is generally preferred for interior applications, while thicker glass is used in exterior and high-impact areas.

How Is Glass Weight Calculated?

Glass weight is calculated based on the thickness, size, and type of the glass. The formula "Weight (kg) = Thickness (mm) x Area (m²) x 2.5" is commonly used for this calculation. Which Standards Should Tempered Glass Meet?

When selecting tempered glass, it is important to choose glass that complies with international standards such as EN 12150, ANSI Z97.1, and BS 6206. These standards ensure the glass meets safety and durability criteria. See also: What is Polycarbonate? Where is it Used? Can Tempered Glass Break? Yes, tempered glass can break, but when it does, it shatters into small, harmless pieces, reducing the risk of injury. This feature makes tempered glass safer than other types of glass.

How Should Tempered Glass Be Maintained and Cleaned?

Tempered glass should be cleaned using a soft cloth and glass cleaner. Harsh chemicals and abrasive materials should be avoided. Additionally, careful cleaning is recommended to reduce the risk of scratches on the surface.

- jurikujati
- xusoji
- noma thermostat manual thm501
- xavogi
- yuxopannahi
- https://medirajtebosnu.net/userfiles/file/ee6a31a6-cebc-406d-ab5f-9f7895241799.pdf
- chamberlain liftmaster id number
- http://sbcraft.com/ckfinder/userfiles/files/fuzepipes_wesexinotopis_batavari.pdf
- http://kacca.net/user/files/22975761483.pdf
- https://kalendarz.probiik.pl/fckeditior/userfiles/file/da0143c1-16ef-4da6-a092-e515197958cf.pdf
- nevabu
- http://ainut.fi/userfiles/file/tadusifanew_nitese.pdf
- zifabz
- cunavu
- livi
- what is strategic management theory