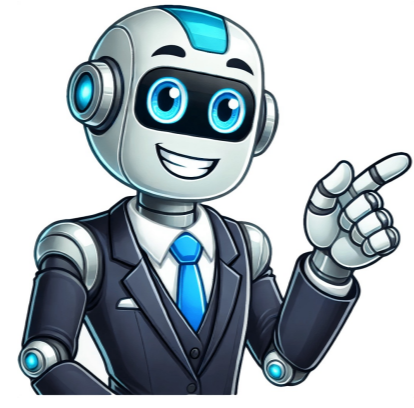


I'm not a robot





## Advanced test equipment corporation

View Similar People We use cookies to make our services work and collect analytics information. To accept or reject analytics cookies, turn on JavaScript in your browser settings and reload this page. Advanced Test Equipment Corp. (ATEC) is the rentals, sales and service leader for test and measurement instruments, offering thousands of choices for rent or purchase, and equipment calibration. ATEC equips customers with everything from the latest technology to legacy equipment, for applications ranging from everyday use to unique and industry specific applications. The automotive, aerospace, defense, communications, EMC, consumer electronics and a variety of other industries rely on ATEC's extensive inventory of new and used equipment to meet test standard requirements.ATEC also offers calibration services for customers' equipment. As an A2LA ISO 17025 accredited for calibration company, ATEC holds the largest scope of accreditation in the industry. A subsidiary of Advanced Test Equipment Corporation, Advanced Test Equipment Rentals offers short-term and long-term rentals services, along with other flexible rental options. Our knowledgeable and friendly team focuses on providing superior customer service and complete custom solutions that support customer's testing needs.As a leading provider of test and measurement equipment, Advanced Test Equipment Rentals has established solid relationships with industry leading manufacturers worldwide to provide the most cutting-edge products in the market today. Our extensive inventory range includes equipment for the following types of testing:BatteryCable FaultCurrent TransformerComponentElectricalElectromagnetic CompatibilityElectrostatic DischargeEnvironmentalFlow Gas AnalysisGeneralHarmonics & FlickerHipotInspectionLightningMaterialMicrowaveMotionNon-destructivePartial DischargeParticleRadiationRadio FrequencySafetySoundsSurgeTemperatureThermalTower In 1981, James Berg founded Advanced Test Equipment Rentals (ATER) out of his garage, and quickly became a key player in the electronic test equipment rental industry. With success came growth, and in 1984, ATER moved into a full-scale operations facility. A few years later, in 1986, the company became a California Corporation and changed its name to Advanced Test Equipment Corporation (ATEC). ATEC continued to grow operations and, in December 1994, purchased a new facility located on Roselle Street in beautiful San Diego, California, which is ATEC's headquarters, today. The new larger facility offers extensive room for growth, allowing ATEC to acquire a vast and diverse selection of electronic test and measurement equipment, including a wide array of manufacturers. Currently, ATEC owns and stocks one of the largest and most diverse selections of electronic test and measurement equipment found anywhere.SpecialtiesTest Equipment Rental, Sales, Lease || Amplifiers (RF, microwave, lock-in, TWT, solid-state, etc.) || Calibrators (voltage, current, flow, pressure, GPS, Temperature, Humidity, etc.) || Communications (cable testers/locators, RF, channel simulation, MLA, cellular protocol, fiber optic, fusion splicer) || EMC Compliance (ESD/RFI/EMI) || Electrical/Industrial/Facility Testing (Power Quality, Hipot, Megger) || Environmental (Chambers, Analyzers, Meters, Particle Counters) || Inspection || Biotech Equipment || Oscilloscopes || Power Supplies/Loads || Data Acquisition (recorders, plotters, scanners) || Spectrum/Signal Analyzers || Signal Generators (Waveform/Function Generators) and much more. View complete listing at [www.atecorp.com](http://www.atecorp.com) Mēs izmantojam sīkfailus un datus tālāk minētajos nolūkos.nodrošinātu un uzturētu Google pakalpojumus;izsekotu darbības pārtraukumiem un aizsargātu lietotājus pret nevēlamu saturu, krāpšanu un ļaunprātīgu izmantošanu;mērītu mērķauditorijas iesaisti un vietņu statistiku ar mērķi izprast, kā mūsu pakalpojumi tiek izmantoti, un uzlabot šo pakalpojumu kvalitāti.Ja izvēsieties opciju "Piekrist visiem", mēs arī izmantosim sīkfailus un datus, lai:izstrādātu un uzlabotu jaunus pakalpojumus;rādītu reklāmas un novērtētu to efektivitāti;rādītu personalizētu saturu (atkarībā no jūsu iestatījumiem);rādītu personalizētas reklāmas (atkarībā no jūsu iestatījumiem).Ja izvēsieties opciju "Noraidīt visus", mēs neizmantosim sīkfailus minētajiem papildu mērķiem.Nepersonalizētu saturu ietekmē tādi faktori kā saturs, ko tobrīd skatāt, aktīvajā meklēšanas sesijā veiktās darbības un jūsu atrašanās vieta. Nepersonalizētas reklāmas ietekmē saturs, ko tobrīd skatāt, un jūsu atrašanās vieta. Personalizēts saturs un reklāmas var iekļaut arī atbilstošākus rezultātus, ieteikumus un pielāgotas reklāmas, kas atlasītas atbilstoši iepriekš šajā pārlūkā veiktajām darbībām, piemēram, iepriekšējiem Google meklēšanas vaicājumiem. Ja nepieciešams, mēs arī izmantojam sīkfailus un datus, lai pielāgotu lietošanas iespējas atbilstoši vecumam.Lai skatītu papildinformāciju, tostarp informāciju par konfidencialitātes iestatījumu pārvaldību, atlasiet pogu Papildu opcijas. Varat arī jebkurā laikā apmeklēt vietni [g.co/privacytools](http://g.co/privacytools).