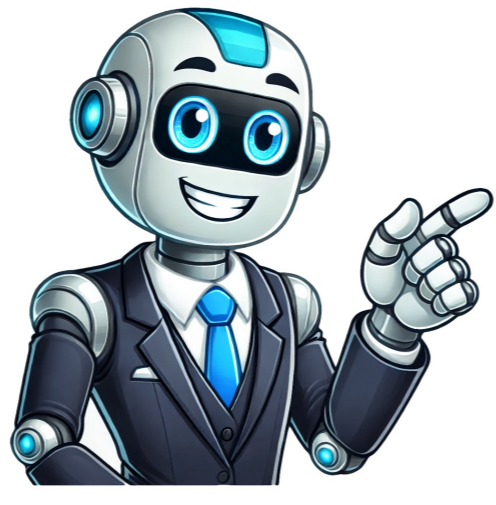


[Click Here](#)



Here are the diagrams and repair parts for Official Craftsman 137215360 4 x 36" belt/disc sander, as well as links to manuals and error code tables, if available. Owner's manualSELECT DIAGRAMBrowse Parts for137215360 Power ToolsPage 1 of 11 Can't find your part? Contact us: +1-309-603-4777Tips to find your model numberCraftsman belt & disc sanders have the powerful motors and rugged components that you need to complete any sanding project. Although Craftsman belt & disc sanders rarely break down, you can never tell when parts will wear out or a failure will eventually occur. When your Craftsman belt & disc sander isn't working as it should, find the replacement parts you need to fix the sander at Sears PartsDirect. Frequently bought Craftsman partsParts you might be looking forPart #422719Replaced by #532422719Manufacturer substitutionThis part replaces 422719. Substitute parts can look different from the original.Part #421825Replaced by #532421825Manufacturer substitutionThis part replaces 421825. Substitute parts can look different from the original.In Stock\$26.6418% OFF Phone Price : \$32.64Part #532405380In Stock\$33.3115% OFF Phone Price : \$39.31Part #58768670In Stock\$59.559% OFF Phone Price : \$65.55Part #942-0741AIn Stock\$28.5417% OFF Phone Price : \$34.54Part #130794Replaced by #532130794Manufacturer substitutionThis part replaces 130794. Substitute parts can look different from the original.In Stock\$67.818% OFF Phone Price : \$73.81How to maintain your Craftsman belt & disc sanderThoroughly clean the sander after each use. Blow dust and grit out of the motor housing using compressed air. Clean the entire exterior of the sander with a damp cloth. Don't immerse any part of the sander in water or liquid to clean the tool.Follow the guidelines in the owner's manual to properly lubricate the sanderBefore each use, check all fasteners on the sander. Tighten any loose fasteners.Inspect the sander for worn or broken parts regularly. Replace any worn or broken parts before using the sander.Work area safety guidelines to follow when using your Craftsman belt & disc sanderKeep the work area clean and well lit because cluttered or dark areas can cause accidents.Don't operate your sander in explosive atmospheres such as in the presence of flammable liquids, gases or dust. The sander can produce sparks that may ignite dust or fumes.Keep children and bystanders clear of the work area when operating the sander. Distractions can cause you to lose control of the sander. 1 Spndl Pulley Obsolete - Not Available \$3.52 Part Number:STD541110 Discontinued Note: Contact Customer Support For Availability 2 Washer 8pk Obsolete - Not Available \$4.99 Part Number:STD551025 Discontinued Note: Contact Customer Support For Availability 3 Brac Swl Mtg Obsolete - Not Available \$28.72 Part Number:821601 Discontinued 4 Screw 8Pk Obsolete - Not Available \$3.88 Part Number:STD601103 Discontinued 8 Washer Obsolete - Not Available \$2.99 Part Number:60317 Discontinued Note: Contact Customer Support For Availability 10 Relief Obsolete - Not Available \$2.99 Part Number:60362 Discontinued Note: Contact Customer Support For Availability 11 Switch Keys Obsolete - Not Available \$11.76 Part Number:22255 Discontinued 12 Nylon Screw Obsolete - Not Available \$2.99 Part Number:60287 Discontinued 13 Sw Box Kit Obsolete - Not Available \$19.14 Part Number:818317-1 Discontinued 800 Nut 8Pk Obsolete - Not Available \$4.99 Part Number:STD541231 Discontinued 800 Flat Washer, 8Pk Obsolete - Not Available \$7.22 Part Number:STD551031 Discontinued Note: Use W/790-00091 800 Lock Washer Obsolete - Not Available \$2.99 Part Number:STD551131 Discontinued Note: Contact Customer Support For Availability 800 Screw 2Pk Obsolete - Not Available \$4.99 Part Number:STD523125 Discontinued 2 Sand Disc Obsolete - Not Available \$84.12 Part Number:68033 Discontinued 3 Screw 2Pk Obsolete - Not Available \$5.48 Part Number:STD503103 Discontinued 4 Table Saw Pulley Obsolete - Not Available \$32.30 Part Number:STD328022 Discontinued 5 Self-Tapping Screw Obsolete - Not Available \$4.99 Part Number:STD600803 Discontinued Note: Contact Customer Support For Availability 7 Scrw Machine Obsolete - Not Available \$2.99 Part Number:133656 Discontinued 9 Shaft Drive Obsolete - Not Available \$51.11 Part Number:68069 Discontinued 11 Unloader Asm Obsolete - Not Available \$355.29 Part Number:38812 Discontinued 12 Screw 5Pk Obsolete - Not Available \$5.39 Part Number:STD523115 Discontinued Note: Contact Customer Support For Availability 13 Lock Washer Obsolete - Not Available \$2.99 Part Number:STD551131 Discontinued Note: Contact Customer Support For Availability 15 Flat Washer, 8Pk Obsolete - Not Available \$7.22 Part Number:STD551031 Discontinued Note: Use W/790-00091 17 Ring 2Pk Obsolete - Not Available \$13.64 Part Number:STD590062 Discontinued 18 Crank Bearing Obsolete - Not Available \$6.57 Part Number:STD315228 Discontinued 19 Screw 5Pk Obsolete - Not Available \$6.11 Part Number:STD523112 Discontinued Note: Contact Customer Support For Availability 20 Sander Backstop Obsolete - Not Available \$36.19 Part Number:47222 Discontinued 21 Pulley Obsolete - Not Available \$42.01 Part Number:47190 Discontinued 22 Screw 5Pk Obsolete - Not Available \$6.09 Part Number:STD502502 Discontinued Note: Contact Customer Support For Availability 23 Crank Bearing Obsolete - Not Available \$6.57 Part Number:STD315228 Discontinued 24 Trap Dust Obsolete - Not Available \$21.42 Part Number:68006 Discontinued 25 Washer 8Pk Obsolete - Not Available \$4.99 Part Number:STD551025 Discontinued Note: Contact Customer Support For Availability 26 Panel Screw Obsolete - Not Available \$3.21 Part Number:STD511105 Discontinued Note: Contact Customer Support For Availability 28 Washer 8Pk Obsolete - Not Available \$6.62 Part Number:STD551037 Discontinued Note: 3/8 X 7/8 X 14 Ga. 29 Nut Cam Obsolete - Not Available \$6.45 Part Number:68007 Discontinued 30 Screw 8Pk Obsolete - Not Available \$2.99 Part Number:STD510605 Discontinued 31 Cam, Lh Obsolete - Not Available \$29.92 Part Number:68008 Discontinued 32 Spring Obsolete - Not Available \$8.46 Part Number:47815 Discontinued 33 Cam, Rh Obsolete - Not Available \$29.92 Part Number:68009 Discontinued 35 Machine Screw, 8-pack Obsolete - Not Available \$6.09 Part Number:STD-510803 Discontinued 37 Brkt Support Obsolete - Not Available \$3.34 Part Number:60254 Discontinued 38 Beltguard Obsolete - Not Available \$12.74 Part Number:60253 Discontinued 39 Screw 8Pk Obsolete - Not Available \$2.99 Part Number:STD601105 Discontinued Note: Contact Customer Support For Availability 40 S Clip Obsolete - Not Available \$10.76 Part Number:60255 Discontinued 41 Beltguard Obsolete - Not Available \$27.14 Part Number:60252 Discontinued 42 Belt Obsolete - Not Available \$12.86 Part Number:STD304410 Discontinued 43 V-belt Pulley, 2-in Obsolete - Not Available \$2.99 Part Number:STD328012 Discontinued 44 Control Shft Obsolete - Not Available \$26.55 Part Number:47622 Discontinued 45 Pin 5Pk Obsolete - Not Available \$5.46 Part Number:STD571807 Discontinued 46 Retaing Ring Obsolete - Not Available \$5.26 Part Number:607461-001 Discontinued 47 Bearing Obsolete - Not Available \$24.55 Part Number:38536 Discontinued 49 Idler Shaft Obsolete - Not Available \$46.87 Part Number:47621 Discontinued 50 5/32 Hex Key Obsolete - Not Available \$4.99 Part Number:28136 Discontinued Note: Contact Customer Support For Availability 51 Adaptor Obsolete - Not Available \$2.99 Part Number:47414 Discontinued 53 Screw 8Pk Obsolete - Not Available \$4.99 Part Number:STD512505 Discontinued Note: Contact Customer Support For Availability 54 Washer 8Pk Obsolete - Not Available \$9.63 Part Number:STD551125 Discontinued Note: Contact Customer Support For Availability 55 Bolt Obsolete - Not Available \$4.99 Part Number:STD525045 Discontinued 56 Nut 5Pk Obsolete - Not Available \$7.77 Part Number:STD541250 Discontinued 57 Screw 5Pk Obsolete - Not Available \$4.99 Part Number:STD523107 Discontinued Note: Contact Customer Support For Availability 58 Screw 2Pk Obsolete - Not Available \$4.99 Part Number:STD523122 Discontinued Note: Contact Customer Support For Availability 60 Nut 8Pk Obsolete - Not Available \$4.99 Part Number:STD541025 Discontinued Note: Contact Customer Support For Availability 63 Screw 5Pk Obsolete - Not Available \$4.99 Part Number:STD523107 Discontinued Note: Contact Customer Support For Availability 65 Pin 5Pk Obsolete - Not Available \$3.57 Part Number:STD571812 Discontinued 66 Worktable Obsolete - Not Available \$41.90 Part Number:68055 Discontinued 67 Tie, Wire \$3.99 Part Number:71165 In Stock 68 Motor Obsolete - Not Available \$308.85 Part Number:12004 Discontinued 800 Nut 8Pk Obsolete - Not Available \$4.99 Part Number:STD541231 Discontinued 800 Lock Washer Obsolete - Not Available \$2.99 Part Number:STD551131 Discontinued Note: Contact Customer Support For Availability 800 Screw 2Pk Obsolete - Not Available \$4.99 Part Number:STD523125 Discontinued 800 Flat Washer, 8Pk Obsolete - Not Available \$7.22 Part Number:STD551031 Discontinued Note: Use W/790-00091 2 Screw Obsolete - Not Available \$2.99 Part Number:STD525206 Discontinued 3 Nut 8Pk Obsolete - Not Available \$4.99 Part Number:STD541025 Discontinued Note: Contact Customer Support For Availability 4 Washer 8Pk Obsolete - Not Available \$3.76 Part Number:STD551225 Discontinued Note: Contact Customer Support For Availability 5 Suprt Chanel Obsolete - Not Available \$8.37 Part Number:68060 Discontinued 6 Stiffener Obsolete - Not Available \$10.76 Part Number:68059 Discontinued 7 Stiffener Obsolete - Not Available \$11.36 Part Number:62615 Discontinued Note: Contact Customer Support For Availability 9 Nut 5Pk Obsolete - Not Available \$3.94 Part Number:STD541050 Discontinued Note: Contact Customer Support For Availability 10 Foot Leveling Obsolete - Not Available \$2.99 Part Number:803835-1 Discontinued 800 Nut 8Pk Obsolete - Not Available \$4.99 Part Number:STD541231 Discontinued 800 Flat Washer, 8Pk Obsolete - Not Available \$7.22 Part Number:STD551031 Discontinued Note: Use W/790-00091 800 Screw 2Pk Obsolete - Not Available \$4.99 Part Number:STD523125 Discontinued 800 Lock Washer Obsolete - Not Available \$2.99 Part Number:STD551131 Discontinued Note: Contact Customer Support For Availability Can't find your part? Contact us: +1-309-603-4777Tips to find your model numberCraftsman makes a wide variety of power sanders that can tackle any job or project that you face. Craftsman palm sanders work great for finishing your craft or refurbishment projects. Craftsman belt sanders are known for reliability but parts can eventually wear out or break. When that happens, find the Craftsman sander parts you need to fix your power sander at Sears PartsDirect. Frequently bought Craftsman partsParts you might be looking forPart #422719Replaced by #532422719Manufacturer substitutionThis part replaces 422719. Substitute parts can look different from the original.Part #421825Replaced by #532421825Manufacturer substitutionThis part replaces 421825. Substitute parts can look different from the original.In Stock\$26.6418% OFF Phone Price : \$32.64Part #532405380In Stock\$33.3115% OFF Phone Price : \$39.31Part #58768670In Stock\$59.559% OFF Phone Price : \$65.55Part #942-0741AIn Stock\$28.5417% OFF Phone Price : \$34.54Part #130794Replaced by #532130794Manufacturer substitutionThis part replaces 130794. Substitute parts can look different from the original.In Stock\$67.818% OFF Phone Price : \$73.81Popular maintenance items for Power SandersParts you might be looking forKeep the work area clean and well lit because cluttered or dark areas can cause accidents.Don't operate your power sander in explosive atmospheres such as in the presence of flammable liquids, gases or dust. The power sander can produce sparks that may ignite dust or fumes.Keep children and bystanders clear of the work area when operating the power sander. Distractions can cause you to lose control of the power sander Gear case needle bearing. The gear case needle bearing attaches in the gear case and allows the output gear to spin smoothly.Lock button spring. The lock button spring applies tension to the lock button when the lock button is pushed and raises the lock button when the grinder is unlocked.Carbon motor brushes. The carbon motor brushes transfer electric current to the spinning armature in the motor.Motor rotor. The drive motor rotor spins to rotate the motor shaft.Find the Craftsman palm sander parts and Craftsman belt sander parts you need to fix any power sander problem at Sears PartsDirect. Sears PartsDirect has Craftsman 4x36 belt sander parts. We also have CMWE231 parts and replacement parts for other power sanders. Use our detailed parts drawings to quickly look up the Craftsman belt disc sander parts you need to get your sander working again. Order the Craftsman disc belt sander parts that you need and fix your power sander fast. Here are the diagrams and repair parts for Official Craftsman 113225931 belt & disc sander, as well as links to manuals and error code tables, if available. Owner's manualSELECT DIAGRAMOn/off power outlet 80382 and mounting bracketCraftsman belt and disc sanderOn/off power outlet 80382 and mounting bracketCraftsman belt and disc sanderBrowse Parts for113225931 Power ToolsPage 1 of 10 We Sell Only Genuine OEM Craftsman® Parts Select a Part Type Bearings Sander Pads Screws Washers It is a genuine OEM sourced 5-inch sanding pad assembly that is specially designed for use with Craftsman orbital sanders. Its purpose is to provide support for hook and loop sandpaper, unfortunately,... This dust bag is a genuine Dewalt replacement part. It is a cloth dust bag with a spring inside to hold shape. This bag also comes with the attachment nozzle. It is everything you need to replace the ... Genuine Manufacturer Approved Carriage Bolt is a standard part that fits a variety of products. This part is sold individually and the Nut is not included. The square area under the head is designed t... This is a genuine Ryobi replacement part. It is sold individually.The purpose of the 039066005050 Spring Clamp is to clamp the sandpaper to the platen of the sander.Once the sandpaper is placed on the... Genuine Ryobi replacement part, this item is sold individually.The purpose of the 900482001 Conversion Pad is to convert the PSA (Adhesive Sand Paper) Pad to a Hook and Loop Pad.All you need to do is ... This is a Ball Bearing that is sealed on both sides. This is a genuine Makita replacement part that is sold individually.mmm Ball bearings minimize friction between 2 parts in your tool that would ot... Genuine Manufacturer Approved replacement part used on a variety of Power Tools. This Ball Bearing has multiple applications depending on your tool. This part is made out of Metal and it is Sold Indiv... This part is an OEM part from Ryobi. The wire clamp is compatible with the S605D8 1/4 Sheet Sander W/Dust Collector and the S605D 1/4 Sheet Finish Sander. This component is fitted onto the platen, hel... This is an authentic OEM approved replacement item commonly used on Makita power tools. Bearings have many useful applications that will differ depending on a tool. Ball bearings are designed to minim... This is a Genuine Manufacturer Sourced replacement part used on Craftsman Power Tools. This is a Carbon Brush with Lead Wire attached. This Brush is Sold Individually. Please note Brush Holder and Spr... It is an authentic OEM approved replacement part that is specially produced for use with Craftsman sanders. This is the hook and loop pad that the sandpaper is attached to. The hooks engage into the l... This torx screw is specially manufactured for use with a variety of power tools. It is an authentic OEM sourced item, not an aftermarket equivalent. This piece of hardware has multiple uses depending ...