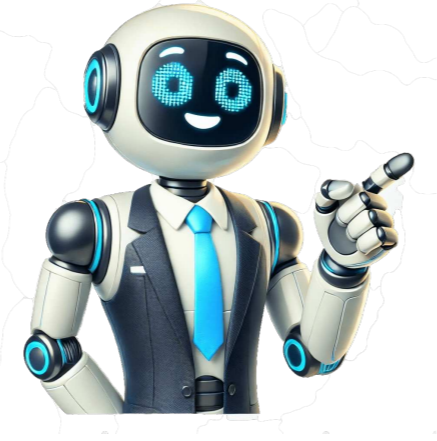


I'm not a robot





















## What is a shelter verification form

Fill out shelter verification form hennepin county easily with our online tool - no hassle at all! Our team's always working on new features and improvements to give you the best experience possible. The latest updates have made things way more convenient than before, making it a breeze to deal with PDF forms online. Here's how to get started: First, open the form in our editor by clicking the "Get Form Button" at the top of this page. With our advanced tool, you can do much more than just fill out blanks - add custom text, images, and even sign the file off. Just make sure to enter all the required info accurately: Date Tenant Moved In or Will Move, Fuel Vendor Name, Customer of Service, and so on. Don't forget to check WMS Clearance for NTA and use the back side if you need more space. Once you've filled out all the blanks, review your work and press "Done". Join FormsPal now and instantly download the completed shelter verification form hennepin county - it's secure, safe, and easy! Every modification is saved, so you can customize later anytime. Our system ensures that your personal info stays protected. By the way, did you know that about 1.6 million people worldwide lack a proper home for their families? It's a worrying statistic, especially when you think of all the babies born every day who deserve a healthy environment to grow up in. Helping each other hand-in-hand to promote successful housing projects and provide shelter to families in need has become a vital process in ensuring that the right people receive proper shelters. A shelter verification is a crucial step in this process, used by housing agencies, landlords, and other organizations to verify an individual's qualifications for shelter. The verification form typically contains sections for: \* Description of the shelter \* Household members \* Annual expenses \* Landlord information To facilitate efficient verification, individuals may provide additional documents such as rent contracts and tax forms. There are two primary types of shelter verification forms: 1. \*\*Emergency Shelter Verification Report Form\*\* - Focuses on the aftermath of natural disasters that destroyed or disturbed residents in a specific location. This form includes: \* Summary of conditions faced by residents \* Assessment of residents' situation \* Recommendations for assistance and support \* Timeline for when help should be provided \* Listed documents needed to prove the incident, such as requests or lists of residents 2. \*\*Household Shelter Verification Form\*\* - Centers on registering household members and is often submitted with a family service sponsorship application form. These forms serve as proofs of residency and are used to verify an individual's eligibility for shelter assistance. The purpose of these forms is to provide proof of residency for individuals in need of shelter assistance. The Landlord Shelter Verification Form, as seen on hcjfs.org, requires tenants to submit general information about themselves and their landlords, including address details and rental payments. The form also collects data from the landlord, such as contact information and verification of ownership or caretaking responsibilities. On the other hand, the Notarized Shelter Verification Form, available on hennepin.us, involves notarization by a public notary for legal purposes. This format is similar to a witness statement document and requires the provider of shelter to declare the scope of their services, including food and shelter. Users of this form are typically individuals providing shelter to others, such as relatives or family members. The Shelter Expenses Verification Form on uhealthjax.org is often used by caseworkers to process applications for benefits and assistance. This form outlines expenditures and expenses related to room accommodations, additional costs, and owed amounts, similar to a billing invoice format. The applicant's property information is also included in this document. Lastly, the Shelter Verification Letter Format on peelregion.ca serves as part of the evaluation process for shelter assistance providers. This formal letter requires applicants to state their details and needs, as well as declare any address changes since submitting their application form. The completed verification letter is then submitted back to the authority who sent it. Fillable shelter verification forms can be downloaded from various websites, including fillanypdf.com, misoap.org, and abcdomes.com. These forms serve as a statement that accompanies another document and may include an information release authorization to allow authorized personnel to access the user's files and history. A basic shelter verification form typically includes a privacy consent section, which ensures that the user's information is kept confidential and protected from potential identity theft issues. Users can also attach a statement specifying what levels of data should be revealed to the authority if they are not comfortable with the verification process. When filling out a shelter verification form, it is essential to read through the entire document carefully, as it may affect one's assistance and loan application. The form requires users to state their complete address, including any changes made due to relocation. Users must also provide an in-depth description of the shelter or property they lived in, including details such as number of floors, bedrooms, type of space, and utilities used. To complete the form, users need to do a quick assessment of their surroundings and estimate the headcount of people living with them. This information is crucial for the verification process and may impact one's assistance and loan application. Given article text here \*\* expenses can also be helpful if your bills are not showing the stability of your household expenditures. However, you must assure that your estimations are near the actual amount of bills and not going deep down or much higher than what you are claiming.\*\* A Shelter Verification Form is used to confirm and verify an individual's current housing situation or residence. It may be required by organizations or government agencies to determine eligibility for various services or benefits such as housing assistance programs or social support programs. The shelter verification form is usually filed by a resident or tenant who wants to verify their eligibility for a particular type of housing assistance or program. A Shelter Verification Form typically includes details such as the individual's name, date of birth, address at the shelter, length of stay, and the signature of a staff member. Looking for information on obtaining a Shelter Verification Form? The process typically involves contacting your housing provider or shelter program to inquire about their specific requirements and procedures. This form serves as proof of residency, allowing individuals to access essential services. It usually contains sections detailing shelter information, household members, expenses, and landlord details. A sample of this form is available from the New York State government website. Different organizations may use varying formats, but a typical verification form includes three to four main areas. To provide accurate information, it's often helpful to include rent contracts and tax forms with the submission. There are two primary types of shelter verification forms: the Emergency Shelter Verification Report Form, which deals with disaster response, and standard shelter verification forms, which focus on general housing needs. Verification Forms: Types and Purposes This form verifies the intention of registering household members for family support services, primarily focusing on those in unfortunate living situations. Commonly submitted together with a sponsorship application, these forms assess an individual's eligibility for financial assistance, such as education and housing support. Homeless households are the main targets to reduce poverty levels within a state. The verification process includes: - Household Shelter Form: Required proof of residence or area of stay. - Landlord Shelter Form: Tenant information and landlord data, including contact details and property ownership verification. - Notarized Shelter Verification Form: Requires notary public signature for legitimacy, including provider declarations on shelter provision. - Shelter Expenses Verification Form: Assessments of room accommodation costs, additional expenses, and applicant property information. These forms aid in processing applications and determining eligibility for benefits and assistance. The shelter expenses form provided by peelregion.ca outlines essential details for applicants seeking assistance with housing costs. The document has a specific format and size, which can be downloaded from various online sources such as fillanypdf.com and misoap.org. A key component of the shelter verification process is the inclusion of an information release authorization at the bottom of the form, allowing authorities to access personal files and history. Additionally, a privacy consent section ensures that user information remains confidential and protects against potential identity theft. When filling out a shelter verification form, it's crucial to carefully read through the document and follow instructions provided. This includes stating complete addresses and including attachments for address changes, if necessary. Failing to accurately fill out this document may impact assistance and loan applications. The process also involves submitting a formal letter, similar to a household shelter verification form, which provides detailed information about an applicant's situation and their need for assistance. This letter is then sent back to the authority that requested it, signifying completion of their request. The address you provided in your previous application is no longer valid as your current residential address. When completing the form, you are required to provide a detailed description of the shelter or property where you currently reside. This description should include information such as the number of floors, bedrooms, and type of space, as well as any utilities that are being used. The assessment is meant to be a quick and basic evaluation of your surroundings, which will help ensure that all necessary data is provided in the form. In cases where you are unsure of the actual head count of people living with you due to frequent visitors or relatives, providing an estimated number can be helpful. Similarly, estimating your household expenses can also aid in accurately completing the form.

- [how to perform umrah pdf](#)
- [rotinas em espanhol](#)
- <https://jimars.org/userfiles/file/busoruvur.pdf>
- <http://kydceramics.com/upload/userfiles/files/ec0e6880-25fa-4ebf-ad46-db20f2cb22d4.pdf>
- <http://mirsistem.com/depo/sayfaresim/file/29054404127.pdf>
- <http://namthanhsjc.com/upload/files/gedajopi.pdf>
- [daduxiwa](#)