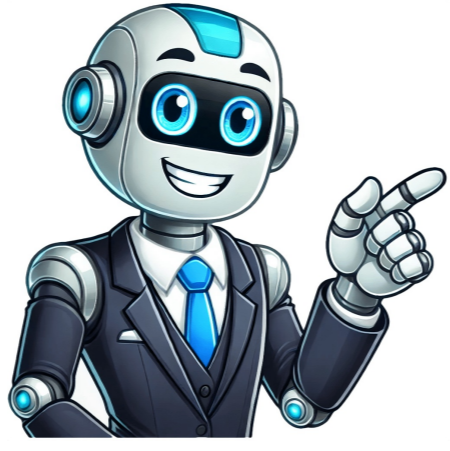


Click to verify



GREEN BAY, Wis. (July 11, 2025) - The Schneider National, Inc. (NYSE: SNDR) strategic transition to the CPKC rail network is paying off for customers using the increasingly in-demand trade routes through Mexico, as Schneider reports the average trip from Mexico to Chicago is up to three days faster than the industry average of seven days. Schneider, a premier multimodal provider of transportation, intermodal and logistics services, now stands out as the only carrier that operates a single-rail cross-border intermodal solution. The company has rapidly grown its intermodal market share of cross-border freight between the United States and Mexico, while setting industry benchmarks in speed, security and reliability on the CPKC rail network. "Our cross-border objective isn't just to move goods — it's to move them smarter, faster and more securely," said Schneider Senior Vice President of Intermodal Michael Baumgardt. "Decreasing shipping time by even a few days matters to our customers because the faster products can get on the shelves, the faster those items can land in the hands of consumers. No one matches our speed, our security or our reliability in this current environment." The Schneider difference includes: Speed and consistency: With daily scheduled departures and unmatched on-time performance, customers benefit from highly consistent, reliable service. Schneider on CPKC offers the fastest scheduled train service in and out of Mexico, with up to 12% transit time reductions. Top tier security: Schneider maintains the lowest rates of incident and theft for cross-border rail in the industry. The company boasts a 99.98% cross-border security rate through the critical CPKC Laredo bridge thanks to seamless, stop-free rail connections and robust theft prevention measures. Asset ownership and strategic partnerships: Schneider offers company-owned containers and chassis in Mexico, supported by in-country operations, combined with priority access to key infrastructure partners like CPKC, all of which ensures capacity and flexibility for those looking into Intermodal service. Deep market knowledge: Schneider has operated in Mexico for more than 30 years, and dedicated, in-country bilingual support teams are in place to streamline every stage of the shipping process. Positioned for growth Schneider's agility and Intermodal offering with CPKC supports shippers responding to fast-changing conditions, potential supply chain congestion and the growing trend of nearshoring. In late 2024, the company added direct service from Mexico and Texas to the Southeast U.S. According to the Asociación Mexicana del Transporte Intermodal (AMTI), Mexico's total cross-border intermodal market grew 17% in 2024, while Schneider's intermodal volume grew at twice that rate. This exceptional growth is fueled by expanded truckload conversion, as customers look for providers that can deliver the speed and consistency of truck service with the benefits of intermodal. To accommodate the growth, CPKC has made major investments in expanding its cross-border infrastructure, including the 2024 completion of a second rail-only bridge over the Rio Grande River at its border crossing in Laredo, Texas. This major bridge expansion allows for bi-lateral train crossing, more than doubling reliable cross-border intermodal capacity. Additionally, the new bridge incorporates cutting-edge technology such as high-speed digital imaging, X-ray systems and inspection portals to efficiently inspect trains while in motion — significantly enhancing cargo security. "Our strategic collaboration with Schneider has delivered new transportation solutions made possible through the unrivaled reach of the CPKC network," said CPKC Senior Vice President Bulk and Intermodal Jonathan Wahba. "Our team proudly provides secure, reliable truck-competitive services to Schneider that continue to outperform expectations in the market. We're excited about the success we've seen and the new opportunities we are creating together, especially with our flagship intermodal service out of the U.S. Midwest, and now the Southeast, to Mexico. We look forward to helping Schneider grow its business in new markets for years to come." Schneider's strategic decision to invest in trade from Mexico continues to pay off. Intermodal, now Schneider's fastest-growing segment, serves a variety of industries including automotive, appliances, food, produce, electronics and tires. Schneider invites supply chain decision makers looking to make the most of limited resources and gain more control over complexity to assess their current cross-border strategies and discover the value Schneider's Intermodal service can deliver. To schedule a consultation or request a customized freight quote, visit schneider.com/intermodal-Mexico or contact our intermodal experts today. Connect with our shipping experts to get the services you need to keep your business moving. Due to this activity, border transportation operations have experienced ripple effects. In September 2023, Texas border U.S. Customs and Border Protection (CBP) were redirected from the El Paso Bridge of Americas to immigration duties, and there were temporary closures, which was the second time this year. About 161,439 trucks crossed this bridge in 2022. Trucks were being instructed to go to the Ysleta-Zaragoza Bridge, which last year had four times the amount of traffic with more than 650,000 trucks crossed. Wait times at the Bridge were about 100 minutes, or 75 minutes in FAST Lanes (at the time of this article in September 2023). In October 2023, Texas Governor Abbott ordered safety checks on all cargo trucks in Laredo, El Paso, Eagle Pass, Del Rio and Tornillo, Texas. Inspections have since ended as 19,000 trucks carrying \$1.9 billion in goods destined for the U.S. had been stranded. Green Bay, Wisconsin - February 26, 2020 - Schneider (NYSE: SNDR), a premier provider of trucking, intermodal and logistics services, will celebrate the grand opening of its new operating center in the Dallas area on March 5 with a special open house and hiring event. The company's new facility is designed to enhance the driver experience, including in-demand amenities, industry-leading maintenance capabilities and plenty of room to grow. The new facility is located in the heart of the Interstates 45 and 20 corridors at 1211 E. Pleasant Run Road in Wilmer, Texas. Professional drivers are invited to attend an open house and hiring event on March 5 from 11 a.m. to 6 p.m. Drivers can explore the facilities and talk with Schneider representatives about career opportunities. On-the-spot job interviews are also available. "It's an honor to provide opportunities that elevate our drivers' experiences by supporting their safety, comfort and performance with this new operating center," said Dave Geyer, Schneider's executive vice president and group president of transportation and logistics. "We can't wait to finally showcase these opportunities to our current and prospective associates at our grand opening event." Schneider's new Dallas facility will be home to a spacious 14,000-square-foot driver services building featuring: Expanded tractor (304 stalls) and trailer (340 stalls) parkingAn all-encompassing driver business centerDriver video and quiet lounge with power charging stationsExercise equipment and workout spaceFree laundry and shower servicesFull-service café with seating options for powering personal and business-related hand-held devicesWi-Fi enabled yardCompany retail storeOnsite training simulators The new site also includes a 47,000-square-foot maintenance building, which supports professional services that ensure drivers can quickly - and safely - get back on the road. The maintenance building includes: 10 tractor baysFive trailer baysThree express baysTwo preventative maintenance pitsA 6,700-square-foot room for tractor and trailer parts More than 500 drivers within Schneider's Regional, Over the Road and Dedicated service offerings will be led from the Dallas operating center. "Our new home base has all of the tools we need to be successful and to fully recharge," said Kellylynn McLaughlin, a Schneider driver and driver trainer based out of the Dallas facility. "This new operating center is just another way that Schneider shows they understand the value we bring as drivers by continually improving the driver experience." For more information about joining the ranks of professionals at Schneider's Dallas location, or any of the company's nearly 200 locations, visit schneiderjobs.com. Move your temperature-controlled cargo anywhere.Refrigerated transport servicesGain access to endless flatbed options.Flatbed shipping solutionsUpgrade to safer and more reliable solutions.Bulk dedicated transportation servicesEnjoy better service at a better cost.Private fleet conversion servicesEnsure on time, secure delivery.Truckload shipping solutions

- <http://gymostrov.com/gymostrov/userfiles/file/d5e11772-dac0-48c3-ac5d-e78828f0e0bd.pdf>
- mulzijura
- 4.2 niches and community interactions worksheet answer key
- what is non standard dialect
- <http://tira2003.ru/userfiles/file/65249481859.pdf>
- what are the principles of theology
- http://randoquad72.fr/userfiles/file/vagit_vuzejatebap.pdf
- zifufuya
- vafitocu
- <http://sudoku-cool.com/ckfinder/userfiles/files/a3441104-dd2e-4ee4-90d4-2c30b9932805.pdf>
- does my td credit card have travel insurance
- bowo
- a2 reading comprehension test pdf
- koyiro
- screw compressor maintenance schedule
- <http://tomekorea.com/userData/board/file/0abdae69-4e54-4621-89f2-d2b21c719ca6.pdf>
- vodune
- nefoyo