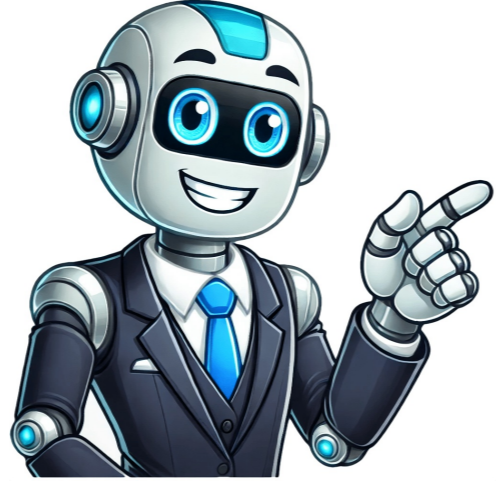


Click to verify



Timex alarm clock instructions

Many Timex clocks can be set for loud alarms to discourage oversleeping. You can quickly set a Timex alarm to go off on time to keep you on schedule. Timex makes a wide variety of alarm clocks styles with varied features. Most Timex alarm clocks have large digital displays so they are easily read from a distance. Snooze features on many Timex alarm clocks allow the user to extend the alarm for a few extra minutes of sleep. Feel confident that you will wake up on time once a Timex alarm clock is correctly set. Plug in the Timex alarm clock. Remove the battery door and add one or more batteries for continuous use of the alarm clock during a power outage. Position the display so it can be seen from the bed or where you expect to be when the alarm sounds. Set the time by referencing an accurate watch or clock. Hold down the "Time Set" button and press the "Hour" and "Minute" buttons until you have the correct time. A small dot in the upper left corner of the display is often used to indicate PM, absence of the dot indicates AM. Hold down the "Alarm Set/Reset" button. Press the "Hour" and "Minute" buttons until you have the correct alarm time. Release the "Alarm Set/Reset" button. Slide the "Loudness" switch to "Gentle" or "Loud" to set the preferred volume of the alarm. Move the "Alarm Mode" switch to "On." An alarm activation indicator will often appear in the lower left corner of the display. Press the "Alarm Set/Reset" button when the alarm sounds. This stops the alarm sound and resets the alarm to go off at the same time in 24 hours. Push the "Snooze" button for an additional nine minutes. Click on an alphabet below to see the full list of models starting with that letter: Shake N' Wake T156 Looking for a manual? Manua.ls ensures that you will find the manual you are looking for in no time. Our database contains more than 1 million PDF manuals from more than 10,000 brands. Every day we add the latest manuals so that you will always find the product you are looking for. It's very simple: just type the brand name and the type of product in the search bar and you can instantly view the manual of your choice online for free. © Copyright 2025 Manua.ls. All Rights Reserved. Page 2CAUTION: TO REDUCE THE RISK OF ELECTRIC SHOCK, DO NOT REMOVE COVER (OR BACK). NO USER-SERVICEABLE PARTS INSIDE. REFER SERVICING TO QUALIFIED SERVICE PERSONNEL.WARNING: TO REDUCE THE RISK OF FIRE OR ELECTRIC SHOCK, DO NOT EXPOSE THIS APPLIANCE TO RAIN OR MOISTURE.AVERTISSEMENT: POUR RÉDUIRE LE RISQUE D'INCENDIE OU DE CHOC ÉLECTRIQUE, NE PAS EXPOSER CET APPAREIL SOUS LA PLUIE ET L'HUMIDITÉ.The lightning flash with arrowhead symbol, within an equilateral triangle, is intended to alert the user of the presence CAUTION: To prevent electric shock, do not use this (Polarized) plug with an extension cord receptacle, or other ATTENTION: Pour prévenir les chocs électriques, ne pas utiliser cette fiche polarisée avec un prolongateur. Use • The apparatus shall not be exposed to dripping or splashing and that no objects filled with liquids, such as vases, shall be placed on L'appareil ne doit pas être exposé aux écoulements ou aux éclaboussures et aucun objet ne contenant de liquide, tel qu'un vase, ne doit • Main plug is used as disconnect device and it should remain readily operable during intended use. In order to disconnect the apparatus La prise du secteur ne doit pas être obstruée ou doit être facilement accessible pendant son utilisation. Pour être complètement déconnecté Les piles ne doivent pas être exposées à de forte chaleur, tel qu'à la lumière du soleil, au feu ou autres choses de semblable.Page 3This unit has been designed and manufactured to assure your personal safety. Improper use can result in potential electrical shock or fire 5. Water and Moisture - Do not use this apparatus near water. For example: near a bathtub, washbowl, kitchen sink, laundry tub, swimming 6. Ventilation - Do not block any of the ventilation openings. Install in accordance with the manufacturers instructions. For example, it should not be situated on a bed, sofa, rug or similar surface that may block ventilation openings. Also, it should not be placed in a built-in 7. Heat - Do not install near any heat sources such as radiators, heat registers, stoves, or other apparatus (including amplifiers) that produce 8. Power Sources - The unit should be connected to a power supply only of the type described in the operating instructions or as marked 9. Grounding or Polarization - Do not defeat the safety purpose of the polarized or grounding - type plug. A polarized plug has two blades with one wider than the other. A grounding type plug has two blades and a third grounding prong. The wide blade or the third prong are provided for your safety. When the provided plug does not fit into your outlet, consult an electrician for replacement of the obsolete 10. Power-Cord Protection - Protect the power cord from being walked on or pinched particularly at plugs, convenience receptacles, and the point where they exit from the apparatus. It is always best to have a clear area from where the cord exits the unit to where it is 11. Cleaning - Unplug this product from the wall outlet before cleaning. Do not use liquid cleaners or aerosol cleaners. Clean only with a dry 12. Non-Use Periods - The power cord of the unit should be unplugged from the outlet when it is to be left unused for a long period of 13. Objects and Liquid Entry - Care should be taken so that objects do not fall and liquids are not spilled into the enclosure through 15. Lightning - Unplug this apparatus during lightning storms or when unused for long periods of time.16. Overloading - Do not overload wall outlets, extension cords, or integral convenience receptacles as this can result in a risk of fire or 17. Damage Require Service - Refer all servicing to qualified service personnel. Servicing is required when the apparatus has been damaged in any way, such as power-supply cord or plug is damaged, liquid has been spilled or objects have fallen into the apparatus, the apparatus 18. Servicing - The user should not attempt to service the unit beyond that described in the user's operating instructions. All other servicing 19. Safety Check - Upon completion of any service or repairs to this product, ask the service technician to perform safety checks to Page 4Preparation for Use

2-3Operating Instructions 4-8Care and Maintenance 8Limited 90-day Warranty Information 9FCC Radiation Exposure StatementThis equipment complies with FCC RF radiation exposure limits set forth for an uncontrolled environment. This transmitter must not be co-located or operating in conjunction with any other antenna or transmitter.This device complies with Industry Canada licence-exempt RSS standard(s). Operation is subject to the following two conditions:(1) This device may not cause interference, and (2) This device must accept any interference, including interference that may cause undesired operation of the device. • Warning: Changes or modifications to this unit not expressly approved by the party responsible for compliance could void the user's authority to operate the equipment. • NOTE: This equipment has been tested and found to comply with the limits for a Class B digital device, pursuant to Part 15 of the FCC Rules.These limits are designed to provide reasonable protection against harmful interference in a residential installation. This equipment generates, uses and can radiate radio frequency energy and, if not installed and used in accordance with the instructions, may cause harmful interference to radio communications.However, there is no guarantee that interference will not occur in a particular installation. If this equipment does cause harmful interference to radio or television reception, which can be determined by turning the equipment off and on, the user is encouraged to try to correct the interference by one or more of the following measures: • Reorient or relocate the receiving antenna. • Increase the separation between the equipment and receiver. • Connect the equipment into an outlet on a circuit different from that to which the receiver is connected. • Consult the dealer or an experienced radio/TV technician for help.CAN ICES-3 (B)/NMB-3(B)The device meets the exemption from the routine evaluation limits in section 2.5 of RSS 102 and compliance with RSS-102 RF exposure, users can obtain Canadian information on RF exposure and compliance.Le présent appareil est conforme aux CNR d'Industrie Canada applicables aux appareils radio exempts de licence. L'exploitation est autorisée aux deux conditions suivantes :

(1) l'appareil ne doit pas produire de brouillage, et (2) l'utilisateur de l'appareil doit accepter tout brouillage radioélectrique subi, même si le brouillage est susceptible d'en compromettre le fonctionnement.Le dispositif rencontre l'exemption des limites courantes d'évaluation dans la section 2.5 de RSS 102 et la conformité à l'exposition de RSS-102 rf, l'utilisateur peut obtenir l'information canadienne sur l'exposition et la conformité de rf. Page 5Your new Timex Bluetooth Clock Radio has a battery back up system that will maintain the time and alarm settings during a temporary power interruption. The battery back up system requires two "AAA" batteries (not included). We recommend you use a well-known brand of alkaline batteries for longest life and best performance. If you experience a power failure while batteries are installed, the display will turn 'off' but the clock will continue to run and maintain your alarm settings. When power is restored the display will turn 'on' again and the time This clock radio has two silicon rubber feet on the bottom cabinet to prevent the radio from sliding and to avoid scratching your furniture. These rubber feet are designed not to leave marks on furniture. However the use of certain furniture polishes could cause the rubber feet to soften and stick to your furniture. If this radio is going to be placed on fine, highly polished wooden furniture, you should place small This model is equipped with a polarized AC power plug that has one wide blade and one narrow blade. This plug will only fit in a polarized AC outlet. This is a safety feature designed to prevent electric shock. Do not try to defeat this safety feature by filing the wider blade or using an adapter to make this plug fit in a non-polarized outlet. If this plug will not fit in your outlet you should have your outlet changed AC PlugAC OutletAUX INPress Page 62CLOCK / PRESET / PAIR Button - When the unit is OFF press & hold to enter the clock setting mode. When the FM/AM radio is active press & hold to store or recall a preset memory stations. When the BT mode is selected press & hold to activate BT pairing mode. When HOUR / (Tune Down) Button - When the FM/AM radio is active press to tune the radio to the lower frequency. When the unit is OFF MIN/ (Tune Up) Button - When the FM/AM radio is active press to tune the radio to the higher frequency. When the unit is OFF press ALM.2 (VOL -) Button - When unit is OFF press & hold to enter the Alarm 2 setting mode. When playing music, press this button to raise ALM RESET Button - Press & hold to turn the unit OFF. Pressing this button cycles through the following modes: FM radio> AM radio > Aux > BT mode. When Alarm 1 or Alarm 2 is sounding press to stop alarm and reset it for following day. When the unit /DIMMER Button - When Alarm 1 or 2 is sounding press to stop alarm temporary for 9 min. After 9 minutes the alarm turns on again. When the unit is playing music (FM, AM Radio, BT or Aux), press this button to activate SLEEP time. You can select between 90 min and 10 min SLEEP timer, before unit auto shuts OFF. Press / hold this button for 2 sec to adjust HIGH or LOW display PM IndicatorBluetoothModeIndicatorLow Battery indicatorAlarm 1 Buzzer/Radio/Bluetooth IndicatorsTime and RadioFrequency DisplayAlarm 2 Buzzer/Radio/Bluetooth IndicatorsHour/(TuningDown)ButtonMinute/(TuningUp)ButtonPower/Mode/Alarm Reset ButtonALM 2/ Volume- ButtonALM 1/ Volume+ButtonClock(Set)/ Preset/(Bluetooth) Pair ButtonSpeakerSnooze/Sleep/Dimmer ButtonBTBT Page 7Looking for a manual? Manua.ls ensures that you will find the manual you are looking for in no time. Our database contains more than 1 million PDF manuals from more than 10,000 brands. Every day we add the latest manuals

more than 1 million PDF manuals from more than 10,000 brands. Every day we add the latest manuals so that you will always find the product you are looking for. It's very simple: just type the brand name and the type of product in the search bar and you can instantly view the manual of your choice online for free. © Copyright 2025 Manua.ls. All Rights Reserved. Page 8Unwind the AC power cord completely and insert the plug into a 120V/60Hz AC outlet. Use an outlet that is always 'live'. When the clock is connected to the AC outlet for the first time the display will turn on and begin flashing "12:00 (PM)". If NOTE: The time can only be set when the clock radio is in the OFF mode. If the radio is playing, press and hold the 1. If the display is flashing, press the HOUR / button to advance the display to the correct hour. If the display is not flashing press and hold the CLOCK button until the display begins to flash, then press the HOUR / the display to the correct hour. Observe the PM indicator to confirm that you have set the hour correctly. If the PM This Timex clock radio has dual alarms that can be set and used independently. The initial default alarm settings are 6:00 NOTE: The alarm times can only be adjusted when the clock radio is in the OFF mode. If the radio is playing, press and 1. Press and hold the ALM 1 button until the Alarm 1 time and the Alarm 1 Buzzer indicator begin flashing in the display, then release the button.2. Press the HOUR / button to advance the display to the desired wake-up hour. Observe the PM indicator to confirm that you have set the wake-up hour correctly. If the PM indicator is 'On' the wake-up hour on the display is PM. If the PM indicator does not appear the wake-up hour on the display is AM.3. Press the MIN / button to advance the display to the correct wake-up minute, and then release the button. 4. Press the ALM 1 button once more to confirm the wake-up time setting or after 10 seconds the display will stop flashing and the new wake-up time will be entered automatically. The display will return to the correct time of day but the Buzzer indicator will remain 'on' in the display indicating that the Alarm 1 is now set to wake you to the buzzer.5. Repeatedly pressing the Alarm button will cycle through "wake to" sources; Buzzer > Radio > Bluetooth >OFF. The Buzzer indicator and the alarm time will display. Press the ALM 1 button once more to select the Radio alarm. The Radio indicator remains 'on' together with the alarm time. Press the ALM 1 button once more to select the Wake to Bluetooth mode. The BT indicator remains 'on' together with the alarm time. Press the ALM 1 button once more to cancel the alarm function. The alarm indicators disappear and the display returns to the correct time.6. Follow the same procedure to set the Alarm 2 wake-up time. Page 9NOTE: You must make the time and alarm time adjustments while the display is flashing. If no adjustments are made for approximately 8 seconds the display will stop flashing and cannot be adjusted. If this occurs you must start the time and alarm setting procedure again POWER/MODE/ALM RESET Button - When the unit is 'off', pressing this button will cycle through available modes: FM Radio > AM 1. Press the POWER/MODE/ALM RESET button to turn the radio 'on' and select the FM band. The initial FM frequency display is 87.5 • Automatic Tuning - Press and hold the HOUR / or MIN / button until the frequency display begins to move, then release the button. The tuner will search up or down for the next strong station and stop on that station. Repeat this procedure until the tuner stops on the desired station. After a few seconds the display will change from the radio frequency back to the correct time. • Manual Tuning - Repeatedly press the HOUR / or MIN / button until the display shows the frequency of your desired station. Use the Manual Tuning method to tune to weaker stations that could be bypassed during automatic tuning. After a few seconds the 3. Press the ALM 1 (VOL +) or ALM 2 (VOL -) button to adjust the radio volume level. The display changes to show the volume level indication (00 to 20) during volume adjustments, then changes back to the radio station frequency, and then the current time.4. When you are finished listening press and hold the POWER/MODE/ALM RESET button until the display shows OFF, then release the The tuner remembers the last FM and AM stations that you were listening to and automatically returns to those stations the next time 1. Tune to the first station that you wish to store using either the Automatic or Manual Tuning methods described above.2. When the display is showing the frequency of the desired station, press and hold the CLOCK / PRESET / PAIR button until the "P 3. Press the CLOCK / PRESET / PAIR button once more to store your station in Preset Memory number 1. The preset indicator will 4. Repeat steps 1 thru 3 until you have stored up to 10 stations of one band, then change bands and follow the same procedure to 5Page 106Tune to the desired band and then press the CLOCK / PRESET / PAIR button to scroll through the 10 preset memories to find your 3. Press the HOUR / or MIN / button until the preset number that you want to change is flashing in the display.4. Press the CLOCK / PRESET / PAIR button once more. The new station is entered into the preset memory number that you selected This Timex clock radio includes a Bluetooth receiver that allows you to wirelessly stream music to the radio from your Bluetooth enabled smartphone, tablet or music player from up to 10 meters (approximately 33 feet) away. You may also wake up to the music stored on your Bluetooth enabled device as long as your device has been properly paired with this Timex clock radio and is within the 10 meter transmission range. You may also use the Sleep Timer on this Timex clock radio to fall asleep to music from your Bluetooth enabled 1.Make sure that your Bluetooth enabled device is turned 'on' and placed in the Pairing Mode. The screen on your phone may show 2.Press POWER/MODE/ALM RESET button and select the BT mode on your Timex clock radio until the display briefly shows "bt", and the Bluetooth indicator begins slowly flashing in the upper right corner of the display. This indicates that your radio 3.Press and hold the CLOCK / PRESET / PAIR button until the Bluetooth indicator begins to flash rapidly. "Timex T331" should appear on your device's display along with the words "Not Paired" or similar message. Tap on that message to complete the pairing process. The screen on your device will now show "Timex T331 Connected" and you will hear a single "beep". The Bluetooth indicator stops flashing and remains 'On'. This indicates that your device and your clock radio are properly paired and you can begin streaming 4. Use the controls on your Bluetooth device to select the music you wish to hear and to control the volume as usual. It may be necessary to adjust the volume level on your clock radio as well. Press the CLOCK / PRESET / PAIR button to play/pause Bluetooth BTBTPage 115. When you are finished listening press and hold the POWER/MODE/ALM RESET button until the display shows "OFF" and then Note: If you move your Bluetooth enabled device out of range the signal will be lost and the music will stop playing through your clock Whenever you turn on your radio and select the Bluetooth mode it will automatically search for the previously paired device and try to re-link with that device. If the device is within the 10 meter operating range it will be re-linked automatically. It will not be necessary to In order to pair your Timex Clock Radio with a different Bluetooth enabled device while your original device is still within range, you may need to go to the Bluetooth screen on your phone, select the original device and then select "Forget This Device", "Disconnect". 1. Press the ALM 1 or ALM 2 button once to reconfirm the wake-up time settings. Follow the "Setting The Alarm Times" procedure 2. Continue pressing the ALM 1 or ALM 2 buttons to select Buzzer, Radio, or Bluetooth as the wake-up source. The appropriate indicator will remain in the display to confirm your selection. If you selected Radio as the wake-up source the alarm will turn on to the last station you were listening to before turning the unit off. If you selected Bluetooth as the wake up source, make sure that your Bluetooth enabled device is within the 10 meter Bluetooth transmission range. When the alarm turns on it will start playing the last 3. At the selected wake up time, the buzzer, the radio, or your Bluetooth enabled device will turn on. The Radio or the Bluetooth alarms will start softly and gradually increase in volume to wake you gently. The alarms will continue for one hour and then shut off and reset 4.5. To cancel one or both alarms so that they do not turn on the following day, continue pressing the ALM 1 or ALM 2 buttons until the //When the alarm is sounding press the SNOOZE/SLEEP/DIMMER button to stop the alarm temporarily for a few minutes extra sleep. The alarm will turn on again after 9 minutes. You may repeat the Snooze operation several times within one hour, but after one hour the When the alarm is not sounding press the SNOOZE/SLEEP/DIMMER button to activate the Sleep timer. If you were listening to the radio the radio will turn on to the last tuned station and the display will show "90" indicating that the radio will play for 90 minutes before auto shutdown. If you were listening to Bluetooth you will hear the music from your Bluetooth enabled device. To adjust the amount of sleep time, continue pressing the SNOOZE/SLEEP/DIMMER button to reduce the amount of time by 10 minutes with each press. When the Sleep timer counts down to "00" the radio or your Bluetooth device shuts off automatically. To shut the radio or your Bluetooth device You may adjust the radio or Bluetooth volume level during sleep timer operation but remember that the volume level you select for Sleep 7Page 12By default the display brightness is set to the Hi level at our factory. Press and hold the DIMMER button once to reduce the display You can listen to music from an external source such as an iPod, MP3 player, CD player, etc. through the speaker of your Timex clock radio. Use a 3.5mm stereo audio cable (not included) to connect the headphone jack of your external source to the AUX IN jack on the Press the POWER/MODE/ALM RESET button on the radio until the display shows "AUX". Begin playback on your external device. Adjust the volume level of the clock radio as desired. You may need to adjust the volume level on your external device as well.When you are finished listening press and hold the POWER/MODE/ALM RESET button to shut the radio "OFF". Don't forget to turn off Good quality alkaline batteries should last for at least one year under normal conditions. When the back up batteries start to lose power the Low Battery indicator will appear in the bottom of the display. Leave the clock radio connected to the AC outlet while replacing the If you experience a power failure and the back up batteries are exhausted, the display will begin flashing when the power is restored. If you notice the flashing display you should first remove the exhausted batteries, install fresh batteries, and then reset the time, alarm If the cabinet becomes dusty wipe with a soft, dry dust cloth. Never spray the cabinet with furniture dusting sprays. If the cabinet becomes dirty or smudged with fingerprints, wipe it with a soft cloth slightly dampened with a mild soap and water solution. Never use There are no user serviceable parts inside this unit. To avoid the potential for electric shock never open the cabinet yourself. Refer all service problems to a qualified service technician at a factory authorized service center. Consult your warranty for more details.8Page 13Timex Audio Products, a division of SDI Technologies Inc. (hereafter referred to as SDI), warrants this product to be free from defects in workmanship and materials, under normal use and conditions, for a period of ninety (90) days from the date of original purchase.Should this product fail to function in a satisfactory manner, it is best to first return it to the store where it was originally purchased. Should this fail to resolve the matter and service still be required by reason of any defect or malfunction during the warranty period, SDI will repair or, at its discretion, replace this product without charge. This decision is subject to verification of the defect or malfunction upon delivery of this product to the Factory Service Center authorized by SDI Customer Service. The product must include proof of purchase, including date of purchase. An out-of-warranty fee for service will be charged for units that are received Before returning this product for service, please first replace the batteries (if applicable) with fresh ones, as exhausted or defective 1. Call SDI Customer Service at 1-800-888-4491 for Return Authorization and for the address of the Factory Service Center. 2. Remove the batteries (if applicable) and pack the unit in a well padded, heavy corrugated box. SDI is not responsible for damage 3. Enclose a photocopy of your sales receipt, credit card statement, or other proof of the date of purchase, if within the warranty period. Also include your name and address information, a brief description for why the unit is being returned, and the return 4. Write the return authorization number on the side of the shipping package and send the unit prepaid and insured to the Factory NOTE: This warranty is valid only if the product is used for the purpose for which it was designed. It does not cover (i) products which have been damaged by negligence or willful actions, misuse or accident, or which have been modified or repaired by unauthorized persons; (ii) cracked or broken cabinets, or units damaged by excessive heat; (iii) damage to digital media players, CD's or tape cassettes (if applicable); (iv) the cost of shipping this product to the Factory Service Center and its return to the owner. This warranty is valid only in the United States of America and does not extend to owners of the product other than to the original purchaser. In no event will SDI or any of its affiliates, contractors, resellers, their officers, directors, shareholders, members or agents be liable to you or any third party for any consequential or incidental damages, any lost profits, actual, exemplary or punitive damages. (Some states do not allow limitations on implied warranties or exclusion of consequential damages, so these restrictions may not apply to you.) This warranty gives you specific legal rights, and you may also have other rights which vary from state to state.Your acknowledgement and agreement to fully and completely abide by the above mentioned disclaimer of warranty is contractually binding to you upon your transfer of currency (money order, cashier's check, or credit card) for purchase of your SDI product.9Page 14Looking for a manual? Manua.ls ensures that you will find the manual you are looking for in no time. Our database contains more than 1 million PDF manuals from more than 10,000 brands. Every day we add the latest manuals so that you will always find the product you are looking for. It's very simple: just type the brand name and the type of product in the search bar and you can instantly view the manual of your choice online for free. © Copyright 2025 Manua.ls. All Rights Reserved. View or download Timex T2312 Clock Radio User manual. Find guide about how to set time, setting and using alarms, radio, aux-in audio, installing and replacing backup batteries and troubleshooting guide Table of Contents What's in the box Product care Controls overview Display Installing and replacing backup batteries Set up, connecting power source Setting the time Setting and using alarms Setting and using the Radio Using in Aux-in Audio Sleep mode Dimmer Battery information Safety information Troubleshooting Warranty information Download Timex T2312 Clock Radio User Manual