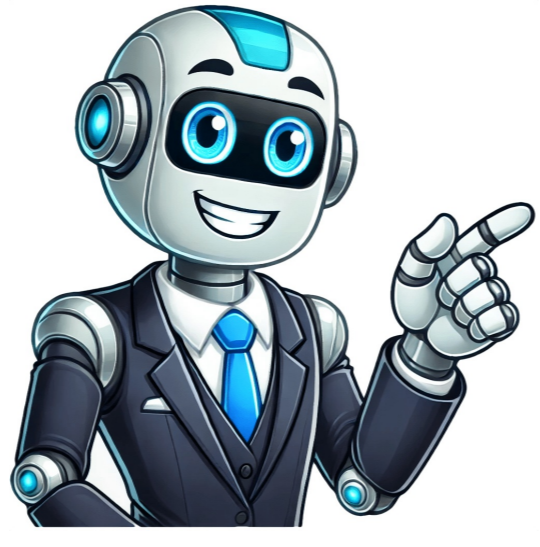


I'm not a robot























The WISC-V (Wechsler Intelligence Scale for Children, Fifth Edition) is scored by comparing your child's individual performance against a group of other students born within a four-month age range of one another (this is called an "age band"). Age ranges are represented by the year number of the child followed by how many months after their birthday it's been with a colon in the middle. A child who is 6 years old, born in October, and taking the test in December would be represented as 6:2A child who is 10 years old, born in March, and taking the test in November would be represented as 10:7All students tested have three possible age bands they may fall into. For example, if your child is 7-years old, depending on when he was born, he would fall into one of the following age bands: 7 years, 0 months (7:0) to 7 years, 3 months (7:3) 7 years, 4 months (7:4) to 7 years, 7 months (7:7) 7 years, 8 months (7:8) to 7 years, 11 months (7:11) If you want your child to be on the older or younger end of the age band in which his or her score will be calculated, you can schedule the test accordingly. WISC-V Age Groups (Yrs: Mos): 6:0 - 6:3 10:0 - 10:3 14:0 - 14:3 6:4 - 6:7 10:4 - 10:7 14:4 - 14:7 6:8 - 6:11 10:8 - 10:11 14:8 - 14:11 7:0 - 7:3 11:0 - 11:3 15:0 - 15:3 7:4 - 7:7 11:4 - 11:7 15:4 - 15:7 7:8 - 7:11 11:8 - 11:11 15:8 - 15:11 8:0 - 8:3 12:0 - 12:3 16:0 - 16:3 8:4 - 8:7 12:4 - 12:7 16:4 - 16:7 8:8 - 8:11 12:8 - 12:11 16:8 - 16:11 9:0 - 9:3 13:0 - 13:3 9:4 - 9:7 13:4 - 13:7 9:8 - 9:11 13:8 - 13:11 The age bands are then standardized and used to determine each child's overall IQ score. The scores are calculated, based on the performance of a normative group of children who fall within that 4-month age bracket. The child's cognitive abilities (verbal comprehension, working memory, visual processing speed, and fluid reasoning) are assessed and compared against performance level norms created from the standardized test sample. The scores are obtained in a statistical manner, and are not based on the percentage of questions answered correctly. That means your child's score will be in comparison to the other children within their age band that took the test, rather than by the number correct they got in total. Thousands of children were given the assessment, and the results were standardized to determine various ranges of ability for each age. Given the results of the sample population, norms are created. Percentile rankings are correlated with a person's performance level based on the norms created from the standardized sample. Your child's score will be a comparison of how he or she performed compared to the standardized sample. Here are all the Standard Score ranges for the WISC-V: Score Range What to Expect Borderline: 70-79. Students who test in this range may struggle to keep up in school and are usually eligible for assistance. Low Average: 80-89. Students who test in this range may struggle to keep up in school, but are not generally eligible for special education or assistance. Average: 90-109. Students who test in this range are average and may or may not struggle to keep up in school. High Average: 110-119. Students who test in this range are high average and do not generally struggle in school. Above Average: 120-129. Students who test in this range are above average and do not generally struggle in school. Moderately Gifted: 130-145. Students who test in this range are moderately gifted and do not generally struggle in school. Highly Gifted: 146-159. Students who test in this range are highly/exceptionally gifted and do not generally struggle in school. To get started with all of the WISC testing material offered by Testing Mom, get started with our 100 Free Questions. 100 Free Practice Questions Wechsler Intelligence Scale for Children® — Fourth and Fifth Editions (WISC®-IV and WISC®-V) are trademarks and/or registered trademarks of Pearson Education, Inc or its affiliate(s), or their licensors. TestingMom.com is not affiliated with nor related to Pearson Education, Inc or its affiliates ("Pearson"). Pearson does not sponsor or endorse any TestingMom.com product, nor have TestingMom.com products or services been reviewed, certified, or approved by Pearson. Trademarks referring to specific test providers are used by TestingMom.com for nominative purposes only and such trademarks are solely the property of their respective owners. See if TestingMom.com supports your child's test by your school district. If you don't see your child's school district listed, check with us! We have practice for other tests as well. xSorry to interrupt CSS Error VISIT US Unit 604 8 Elizabeth Macarthur Dr Bella Vista NSW 2153 Hours: 10 am to 7 pm (Mon to Fri) CALL M: 0410 261 838 F: (02) 8458 5127 The Wechsler Intelligence Scale for Children - Fifth Edition (WISC-V) is a key tool for assessing the cognitive abilities of children aged 6 to 16. This article provides an in-depth exploration of the WISC-V, covering its structure, key domains, and importance for diagnosing learning disabilities, identifying giftedness, and guiding educational interventions. The WISC-V is a standardized intelligence test designed to measure a child's cognitive abilities across five key domains. It offers a comprehensive profile of intellectual strengths and weaknesses and helps inform educational decisions and interventions. This test is particularly useful in diagnosing learning disabilities, tracking cognitive development, and identifying giftedness. The WISC-V measures cognitive functioning across five primary index scores: Verbal Comprehension Index (VCI): Assesses verbal reasoning, vocabulary, and the ability to solve problems using verbal information. Visual-Spatial Index (VSI): Evaluates the ability to understand visual information and solve spatial problems. Fluid Reasoning Index (FRI): Tests logical thinking and the ability to solve novel problems. Working Memory Index (WMI): Focuses on holding and manipulating information over short periods. Processing Speed Index (PSI): Measures how quickly and accurately simple cognitive tasks are completed. The WISC-V consists of 16 subtests, 10 of which are core tests contributing to the Full-Scale IQ (FSIQ) score. The remaining six subtests provide supplemental insights. Core subtests include Similarities, Vocabulary, Block Design, and more. Supplemental subtests like Arithmetic and Comprehension can clarify cognitive profiles when needed. The WISC-V evaluates several critical areas of cognitive functioning: Verbal Abilities: Measuring language skills, comprehension, and reasoning. Nonverbal and Visual-Spatial Skills: Assessing the ability to interpret visual information and solve spatial problems. Memory: Evaluating short-term and working memory capabilities. Processing Speed: How quickly a child can process simple cognitive tasks. The WISC-V plays a critical role in: Identifying Learning Disabilities: Diagnosing cognitive deficits such as dyslexia and ADHD. Giftedness Identification: Highlighting intellectual strengths for placement in advanced educational programs. Guiding Educational Interventions: Creating tailored educational plans based on detailed cognitive profiles. Tracking Cognitive Development: Monitoring changes in cognitive abilities over time. The WISC-V provides a Full-Scale IQ (FSIQ) score, offering an overall measure of cognitive functioning, alongside index scores for specific cognitive domains. The FSIQ is typically used for a broad understanding of a child's intelligence, while discrepancies between index scores can indicate uneven cognitive development. The WISC-V is generally administered by licensed psychologists and is suitable for children aged 6 to 16. It is often used for children facing academic challenges, those being evaluated for learning disabilities, or those being assessed for gifted programs. Since the WISC-V measures cognitive abilities, no specific preparation is required. However, ensuring that the child is well-rested, calm, and relaxed can contribute to a better assessment experience. A positive attitude towards the test is also beneficial for reducing any test-related anxiety. Additional Resources The WISC-V is a tool for understanding a child's cognitive abilities, offering detailed insights into intellectual strengths and weaknesses. Whether diagnosing learning difficulties or identifying giftedness, it helps shape educational strategies that support the child's cognitive and academic development. Back to Top